

Lurano, 27 September 2022

Letter N. N.006/2022/DC-LC

Object: New serial system hardware

Dear Gentlemen,

With the purpose of promoting continuous product improvement be advised that for the Ethernet IP, Profinet, Ethercat protocol nodes of the Optyma series F - S - T family have been updated with the latest technology hardware.

The modification is summarized in the below tables showing the new products codes Vs the old code.

Codes		
<i>Current Code</i>	<i>New Code</i>	<i>Description</i>
5722.32S.PN	5722.32S.PN.A	MODULE OPTYMA-S SLAVE PROFINET IO RT/IRT 64IN-32OUT
5722.32S.EC	5722.32S.EC.A	MODULE OPTYMA-S SLAVE ETHERCAT 32IN-32OUT
5722.32S.EI	5722.32S.EI.A	MODULE OPTYMA-S SLAVE ETHERNET/IP 64IN-32OUT
5725.32F.PN	5725.32F.PN.A	MODULE OPTYMA-F SLAVE PROFINET IO RT/IRT 64IN-32OUT
5725.32F.EC	5725.32F.EC.A	MODULE OPTYMA-F ETHERCAT 32IN-32OUT
5725.32F.EI	5725.32F.EI.A	MODULE OPTYMA-F SLAVE ETHERNET/IP 64IN-32OUT
5725.32T.PN	5725.32T.PN.A	MODULE OPTYMA-T SLAVE PROFINET IO RT/IRT 64IN-32OUT
5725.32T.EC	5725.32T.EC.A	MODULE OPTYMA-T SLAVE ETHERCAT 32IN-32OUT
5725.32T.EI	5725.32T.EI.A	MODULE OPTYMA-T SLAVE ETHERNET/IP 64IN-32OUT

Standard code – not shown in catalog		
<i>Codice attuale</i>	<i>Nuovo codice</i>	<i>Descrizione</i>
5725.64F.EC	5725.64F.EC.A	MODULE OPTYMA-F SLAVE ETHERCAT 64IN-64OUT

PNEUMAX S.p.A.

Società unipersonale soggetta a direzione e coordinamento di PNEUMAX HOLDING S.p.A.

Sede operativa: Via Cascina Barbellina, 10 - 24050 Lurano (BG) - Italy

Sede legale: Via Archimede, 57 - 20129 Milano (MI) - Italy



PNEUMAX

5725.64F.PN	5725.64F.PN.A	MODULE OPTYMA-F SLAVE PROFINET IO RT/IRT 64IN-64OUT
5725.64F.ECP	5725.64F.ECP.A	MODULE OPTYMA-F SLAVE ETHERCAT 64IN-64OUT PIN2-LINEA PASS

Following this communication we kindly ask you to use the new ordering codes for future orders.

Please also take notice of the below points:

1) the following two codes will no longer be available as standard version of the Ethercat protocol already includes the RC filter.

5725.32F.ECH MODULE OPTYMA-F ETHERCAT 32IN-32OUT EMC FILTER

5722.32S.ECH MODULE OPTYMA-S SLAVE ETHERCAT 32IN-32OUT EMC FILTER

2) the new Nodes require the use of a new configuration file

3) it is possible to replace the old Nodes already present on the customers' machines by updating the configuration file installed in the PLC (technical time about 120 seconds).

XX

Example method Replacement sequences for new GSDML file (will follow specific technical communication for each protocol)

NOTE: the new codes for the CADENAS configurator are being defined as well as the changes to be made to the General Catalog.

About the BOMs of the special configurations, these will be updated according to the requests.

To perform the replacement from Old Component to New Component, the actions are as follows:

- Open TIA Portal Project.
- In the project navigation click on "Devices & Networks".
- In the network view, delete the node to be replaced (remembering the I/O and IP addresses).
- In the navigation bar, under "Tools" select "Manage general station description files (GSD)"

PNEUMAX S.p.A.

Società unipersonale soggetta a direzione e coordinamento di PNEUMAX HOLDING S.p.A.

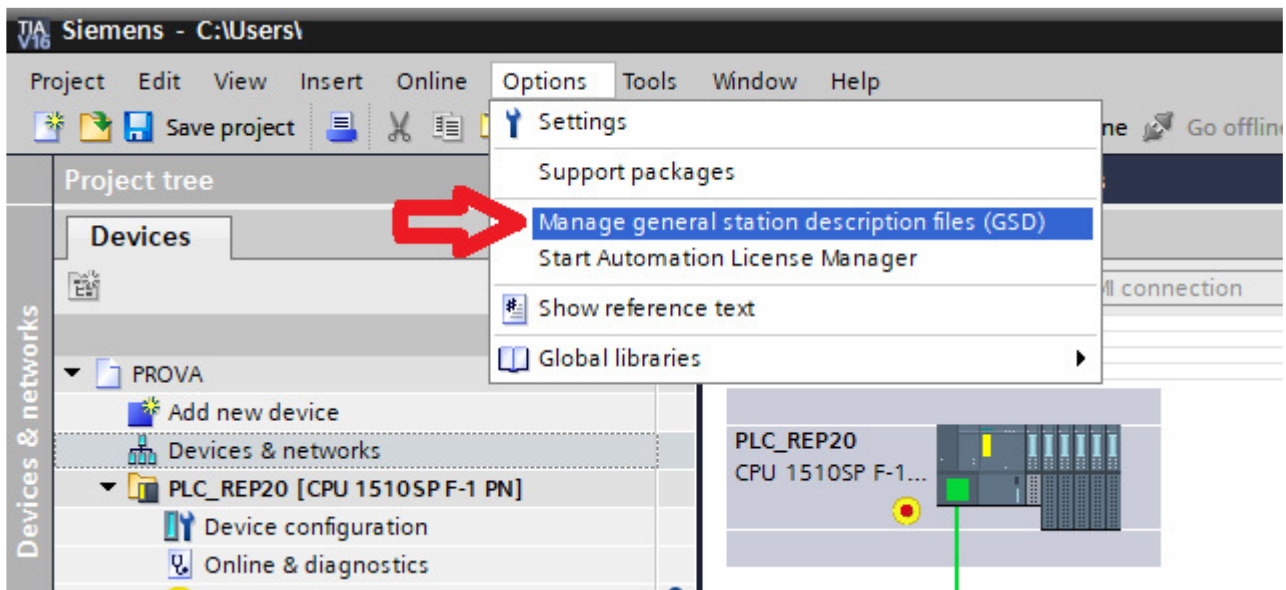
Sede operativa: Via Cascina Barbellina, 10 - 24050 Lurano (BG) - Italy

Sede legale: Via Archimede, 57 - 20129 Milano (MI) - Italy

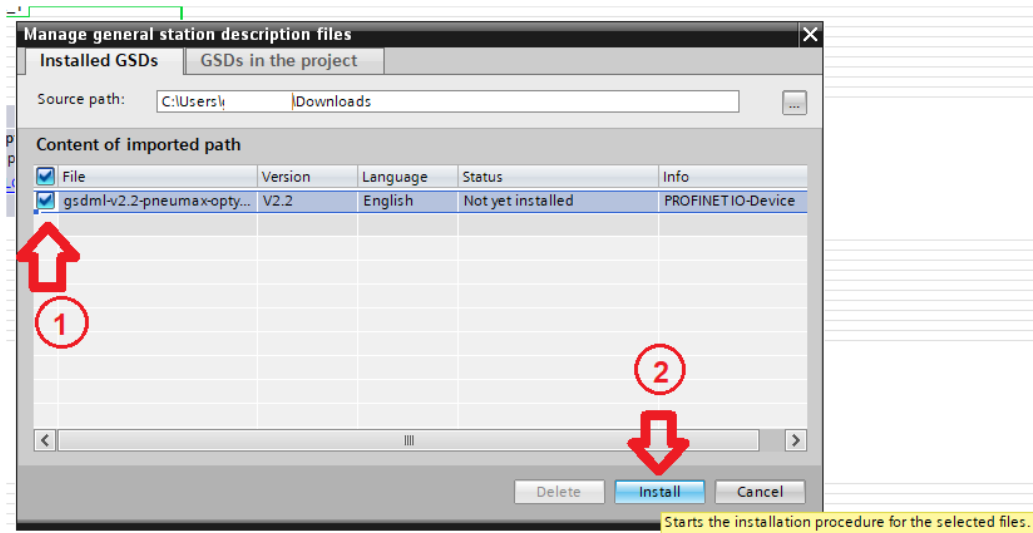
Cap. Soc. € 2.700.000 I.V. - C.F. e P. Iva 02893330163 - Reg. Imprese MI n. 02893330163 - R.E.A. MI 1670562 - R.E.A. BG n. 331626 - N. Ident. IT 02893330163
P. +39 035 41 92 777 - F. +39 035 41 92 740/1 - info@pneumaxspa.com - www.pneumaxspa.com



PNEUMAX



- Choose the folder where the new configuration file has been downloaded and click on "Install".



- Once the installation of the GSDML is finished, return to the "Devices & Networks" view.
- In the hardware catalog located on the right, search for "Optyma Series" and drag it into the view.

PNEUMAX S.p.A.

Società unipersonale soggetta a direzione e coordinamento di PNEUMAX HOLDING S.p.A.

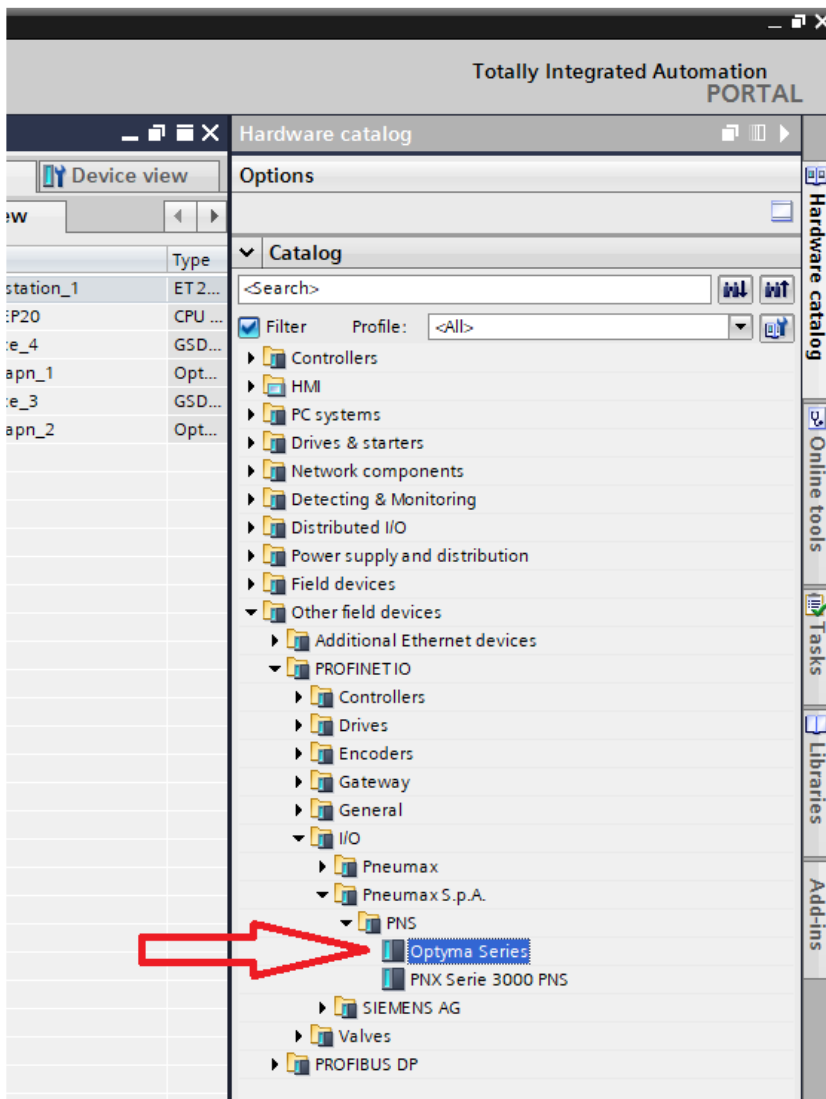
Sede operativa: Via Cascina Barbellina, 10 - 24050 Lurano (BG) - Italy

Sede legale: Via Archimede, 57 - 20129 Milano (MI) - Italy

Cap. Soc. € 2.700.000 I.V. - C.F. e P. Iva 02893330163 - Reg. Imprese MI n. 02893330163 - R.E.A. MI 1670562 - R.E.A. BG n. 331626 - N. Ident. IT 02893330163
P. +39 035 41 92 777 - F. +39 035 41 92 740/1 - info@pneumaxspa.com - www.pneumaxspa.com



PNEUMAX



- Set the IP address and the Profinet name of the node.

PNEUMAX S.p.A.

Società unipersonale soggetta a direzione e coordinamento di PNEUMAX HOLDING S.p.A.

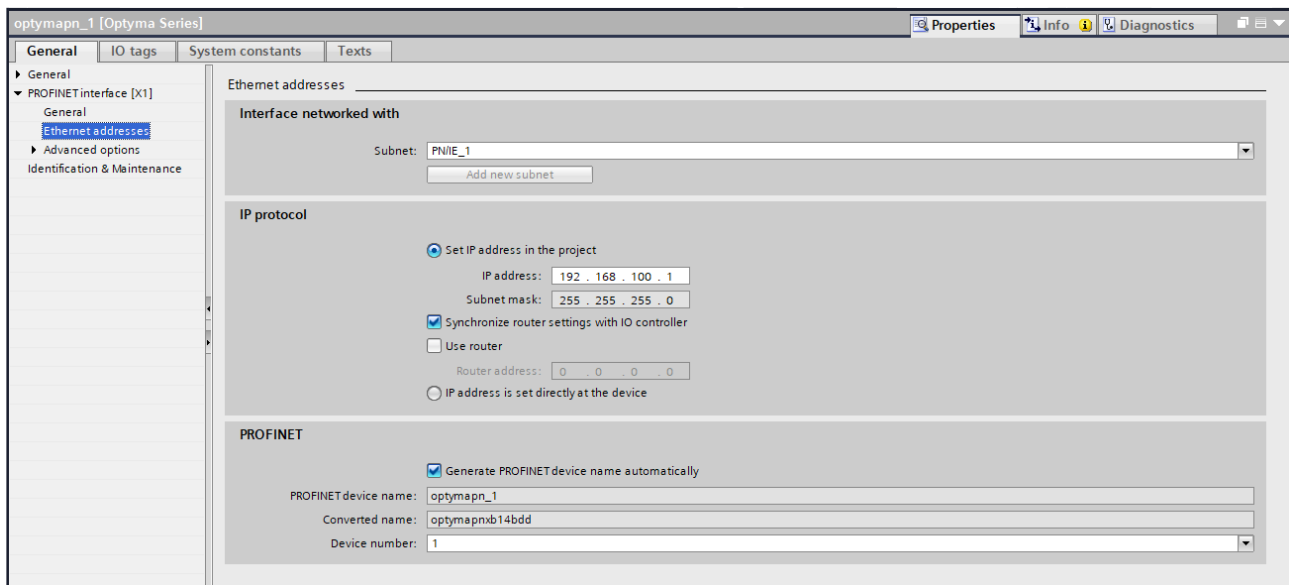
Sede operativa: Via Cascina Barbellina, 10 - 24050 Lurano (BG) - Italy

Sede legale: Via Archimede, 57 - 20129 Milano (MI) - Italy

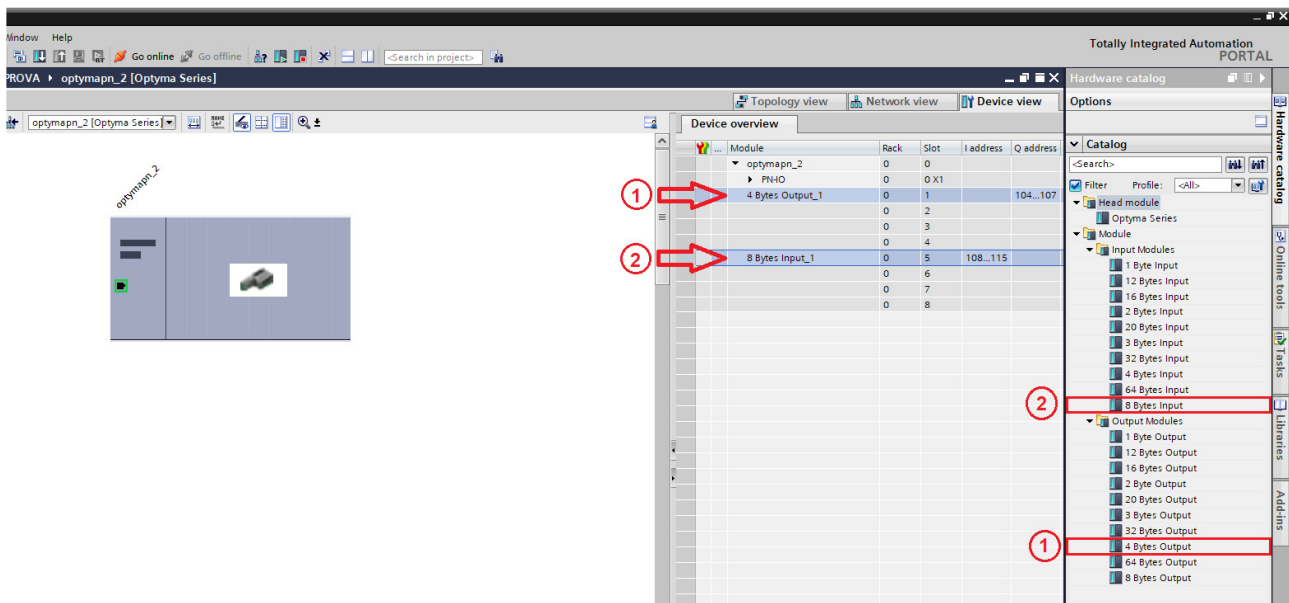
Cap. Soc. € 2.700.000 I.V. - C.F. e P. Iva 02893330163 - Reg. Imprese MI n. 02893330163 - R.E.A. MI 1670562 - R.E.A. BG n. 331626 - N. Ident. IT 02893330163
P. +39 035 41 92 777 - F. +39 035 41 92 740/1 - info@pneumaxspa.com - www.pneumaxspa.com



PNEUMAX



- Double click on the node to enter the "Device View" page.
- In the hardware catalog on the right, drag 8 Bytes Input to SLOT 5 and 4 Bytes Output to SLOT 1.



- Enter the I/O addresses set on the old node under "Address I" and "Address Q".
- Download the Hardware and Software configuration on PLC.

PNEUMAX S.p.A.

Società unipersonale soggetta a direzione e coordinamento di PNEUMAX HOLDING S.p.A.

Sede operativa: Via Cascina Barbellina, 10 - 24050 Lurano (BG) - Italy

Sede legale: Via Archimede, 57 - 20129 Milano (MI) - Italy

Cap. Soc. € 2.700.000 I.V. - C.F. e P. Iva 02893330163 - Reg. Imprese MI n. 02893330163 - R.E.A. MI 1670562 - R.E.A. BG n. 331626 - N. Ident. IT 02893330163
P. +39 035 41 92 777 - F. +39 035 41 92 740/1 - info@pneumaxspa.com - www.pneumaxspa.com