

Raccords polymère serie "P"

P1 Droit mâle

Métrique	Impériale
P1.04/05	P1.3/16-1/8
P1.04/06	P1.3/16-1/4
P1.04/08	P1.3/16-1/2
P1.04/10	P1.3/16-3/8
P1.04/12	P1.3/16-1/2
P1.04/14	P1.3/16-5/8
P1.04/16	P1.3/16-3/4
P1.04/18	P1.3/16-7/8
P1.04/20	P1.3/16-1
P1.04/22	P1.3/16-1 1/8
P1.04/24	P1.3/16-1 1/4
P1.04/26	P1.3/16-1 1/2
P1.04/28	P1.3/16-1 3/8
P1.04/30	P1.3/16-1 1/2
P1.04/32	P1.3/16-1 3/4
P1.04/34	P1.3/16-1 7/8
P1.04/36	P1.3/16-2
P1.04/38	P1.3/16-2 1/8
P1.04/40	P1.3/16-2 1/4
P1.04/42	P1.3/16-2 1/2
P1.04/44	P1.3/16-2 3/8
P1.04/46	P1.3/16-2 1/2
P1.04/48	P1.3/16-2 3/4
P1.04/50	P1.3/16-2 3/8
P1.04/52	P1.3/16-2 7/8
P1.04/54	P1.3/16-3
P1.04/56	P1.3/16-3 1/8
P1.04/58	P1.3/16-3 1/4
P1.04/60	P1.3/16-3 1/2
P1.04/62	P1.3/16-3 3/8
P1.04/64	P1.3/16-3 1/2
P1.04/66	P1.3/16-3 3/4
P1.04/68	P1.3/16-3 7/8
P1.04/70	P1.3/16-4
P1.04/72	P1.3/16-4 1/8
P1.04/74	P1.3/16-4 1/4
P1.04/76	P1.3/16-4 1/2
P1.04/78	P1.3/16-4 3/8
P1.04/80	P1.3/16-4 1/2
P1.04/82	P1.3/16-4 3/4
P1.04/84	P1.3/16-4 7/8
P1.04/86	P1.3/16-5
P1.04/88	P1.3/16-5 1/8
P1.04/90	P1.3/16-5 1/4
P1.04/92	P1.3/16-5 1/2
P1.04/94	P1.3/16-5 3/8
P1.04/96	P1.3/16-5 1/2
P1.04/98	P1.3/16-5 3/4
P1.04/100	P1.3/16-5 3/8

P1G Droit mâle avec joint

Métrique	Impériale
P1G.04/05	P1G.3/16-1/8
P1G.04/06	P1G.3/16-1/4
P1G.04/08	P1G.3/16-1/2
P1G.04/10	P1G.3/16-3/8
P1G.04/12	P1G.3/16-1/2
P1G.04/14	P1G.3/16-5/8
P1G.04/16	P1G.3/16-3/4
P1G.04/18	P1G.3/16-7/8
P1G.04/20	P1G.3/16-1
P1G.04/22	P1G.3/16-1 1/8
P1G.04/24	P1G.3/16-1 1/4
P1G.04/26	P1G.3/16-1 1/2
P1G.04/28	P1G.3/16-1 3/8
P1G.04/30	P1G.3/16-1 1/2
P1G.04/32	P1G.3/16-1 3/4
P1G.04/34	P1G.3/16-1 7/8
P1G.04/36	P1G.3/16-2
P1G.04/38	P1G.3/16-2 1/8
P1G.04/40	P1G.3/16-2 1/4
P1G.04/42	P1G.3/16-2 1/2
P1G.04/44	P1G.3/16-2 3/8
P1G.04/46	P1G.3/16-2 1/2
P1G.04/48	P1G.3/16-2 3/4
P1G.04/50	P1G.3/16-2 3/8
P1G.04/52	P1G.3/16-2 7/8
P1G.04/54	P1G.3/16-3
P1G.04/56	P1G.3/16-3 1/8
P1G.04/58	P1G.3/16-3 1/4
P1G.04/60	P1G.3/16-3 1/2
P1G.04/62	P1G.3/16-3 3/8
P1G.04/64	P1G.3/16-3 1/2
P1G.04/66	P1G.3/16-3 3/4
P1G.04/68	P1G.3/16-3 7/8
P1G.04/70	P1G.3/16-4
P1G.04/72	P1G.3/16-4 1/8
P1G.04/74	P1G.3/16-4 1/4
P1G.04/76	P1G.3/16-4 1/2
P1G.04/78	P1G.3/16-4 3/8
P1G.04/80	P1G.3/16-4 1/2
P1G.04/82	P1G.3/16-4 3/4
P1G.04/84	P1G.3/16-4 7/8
P1G.04/86	P1G.3/16-5
P1G.04/88	P1G.3/16-5 1/8
P1G.04/90	P1G.3/16-5 1/4
P1G.04/92	P1G.3/16-5 1/2
P1G.04/94	P1G.3/16-5 3/8
P1G.04/96	P1G.3/16-5 1/2
P1G.04/98	P1G.3/16-5 3/4
P1G.04/100	P1G.3/16-5 3/8

P15 Coude compact

Métrique	Impériale
P15.04/05	P15.3/16-1/8
P15.04/06	P15.3/16-1/4
P15.04/08	P15.3/16-1/2
P15.04/10	P15.3/16-3/8
P15.04/12	P15.3/16-1/2
P15.04/14	P15.3/16-5/8
P15.04/16	P15.3/16-3/4
P15.04/18	P15.3/16-7/8
P15.04/20	P15.3/16-1
P15.04/22	P15.3/16-1 1/8
P15.04/24	P15.3/16-1 1/4
P15.04/26	P15.3/16-1 1/2
P15.04/28	P15.3/16-1 3/8
P15.04/30	P15.3/16-1 1/2
P15.04/32	P15.3/16-1 3/4
P15.04/34	P15.3/16-1 7/8
P15.04/36	P15.3/16-2
P15.04/38	P15.3/16-2 1/8
P15.04/40	P15.3/16-2 1/4
P15.04/42	P15.3/16-2 1/2
P15.04/44	P15.3/16-2 3/8
P15.04/46	P15.3/16-2 1/2
P15.04/48	P15.3/16-2 3/4
P15.04/50	P15.3/16-2 3/8
P15.04/52	P15.3/16-2 7/8
P15.04/54	P15.3/16-3
P15.04/56	P15.3/16-3 1/8
P15.04/58	P15.3/16-3 1/4
P15.04/60	P15.3/16-3 1/2
P15.04/62	P15.3/16-3 3/8
P15.04/64	P15.3/16-3 1/2
P15.04/66	P15.3/16-3 3/4
P15.04/68	P15.3/16-3 7/8
P15.04/70	P15.3/16-4
P15.04/72	P15.3/16-4 1/8
P15.04/74	P15.3/16-4 1/4
P15.04/76	P15.3/16-4 1/2
P15.04/78	P15.3/16-4 3/8
P15.04/80	P15.3/16-4 1/2
P15.04/82	P15.3/16-4 3/4
P15.04/84	P15.3/16-4 7/8
P15.04/86	P15.3/16-5
P15.04/88	P15.3/16-5 1/8
P15.04/90	P15.3/16-5 1/4
P15.04/92	P15.3/16-5 1/2
P15.04/94	P15.3/16-5 3/8
P15.04/96	P15.3/16-5 1/2
P15.04/98	P15.3/16-5 3/4
P15.04/100	P15.3/16-5 3/8

P23 «Y» tube

Métrique	Impériale
P23.04/05	P23.3/16-1/8
P23.04/06	P23.3/16-1/4
P23.04/08	P23.3/16-1/2
P23.04/10	P23.3/16-3/8
P23.04/12	P23.3/16-1/2
P23.04/14	P23.3/16-5/8
P23.04/16	P23.3/16-3/4
P23.04/18	P23.3/16-7/8
P23.04/20	P23.3/16-1
P23.04/22	P23.3/16-1 1/8
P23.04/24	P23.3/16-1 1/4
P23.04/26	P23.3/16-1 1/2
P23.04/28	P23.3/16-1 3/8
P23.04/30	P23.3/16-1 1/2
P23.04/32	P23.3/16-1 3/4
P23.04/34	P23.3/16-1 7/8
P23.04/36	P23.3/16-2
P23.04/38	P23.3/16-2 1/8
P23.04/40	P23.3/16-2 1/4
P23.04/42	P23.3/16-2 1/2
P23.04/44	P23.3/16-2 3/8
P23.04/46	P23.3/16-2 1/2
P23.04/48	P23.3/16-2 3/4
P23.04/50	P23.3/16-2 3/8
P23.04/52	P23.3/16-2 7/8
P23.04/54	P23.3/16-3
P23.04/56	P23.3/16-3 1/8
P23.04/58	P23.3/16-3 1/4
P23.04/60	P23.3/16-3 1/2
P23.04/62	P23.3/16-3 3/8
P23.04/64	P23.3/16-3 1/2
P23.04/66	P23.3/16-3 3/4
P23.04/68	P23.3/16-3 7/8
P23.04/70	P23.3/16-4
P23.04/72	P23.3/16-4 1/8
P23.04/74	P23.3/16-4 1/4
P23.04/76	P23.3/16-4 1/2
P23.04/78	P23.3/16-4 3/8
P23.04/80	P23.3/16-4 1/2
P23.04/82	P23.3/16-4 3/4
P23.04/84	P23.3/16-4 7/8
P23.04/86	P23.3/16-5
P23.04/88	P23.3/16-5 1/8
P23.04/90	P23.3/16-5 1/4
P23.04/92	P23.3/16-5 1/2
P23.04/94	P23.3/16-5 3/8
P23.04/96	P23.3/16-5 1/2
P23.04/98	P23.3/16-5 3/4
P23.04/100	P23.3/16-5 3/8

P24 «Y» mâle

Métrique	Impériale
P24.04/05	P24.3/16-1/8
P24.04/06	P24.3/16-1/4
P24.04/08	P24.3/16-1/2
P24.04/10	P24.3/16-3/8
P24.04/12	P24.3/16-1/2
P24.04/14	P24.3/16-5/8
P24.04/16	P24.3/16-3/4
P24.04/18	P24.3/16-7/8
P24.04/20	P24.3/16-1
P24.04/22	P24.3/16-1 1/8
P24.04/24	P24.3/16-1 1/4
P24.04/26	P24.3/16-1 1/2
P24.04/28	P24.3/16-1 3/8
P24.04/30	P24.3/16-1 1/2
P24.04/32	P24.3/16-1 3/4
P24.04/34	P24.3/16-1 7/8
P24.04/36	P24.3/16-2
P24.04/38	P24.3/16-2 1/8
P24.04/40	P24.3/16-2 1/4
P24.04/42	P24.3/16-2 1/2
P24.04/44	P24.3/16-2 3/8
P24.04/46	P24.3/16-2 1/2
P24.04/48	P24.3/16-2 3/4
P24.04/50	P24.3/16-2 3/8
P24.04/52	P24.3/16-2 7/8
P24.04/54	P24.3/16-3
P24.04/56	P24.3/16-3 1/8
P24.04/58	P24.3/16-3 1/4
P24.04/60	P24.3/16-3 1/2
P24.04/62	P24.3/16-3 3/8
P24.04/64	P24.3/16-3 1/2
P24.04/66	P24.3/16-3 3/4
P24.04/68	P24.3/16-3 7/8
P24.04/70	P24.3/16-4
P24.04/72	P24.3/16-4 1/8
P24.04/74	P24.3/16-4 1/4
P24.04/76	P24.3/16-4 1/2
P24.04/78	P24.3/16-4 3/8
P24.04/80	P24.3/16-4 1/2
P24.04/82	P24.3/16-4 3/4
P24.04/84	P24.3/16-4 7/8
P24.04/86	P24.3/16-5
P24.04/88	P24.3/16-5 1/8
P24.04/90	P24.3/16-5 1/4
P24.04/92	P24.3/16-5 1/2
P24.04/94	P24.3/16-5 3/8
P24.04/96	P24.3/16-5 1/2
P24.04/98	P24.3/16-5 3/4
P24.04/100	P24.3/16-5 3/8

P24G «Y» mâle avec joint

Métrique	Impériale
P24G.04/05	P24G.3/16-1/8
P24G.04/06	P24G.3/16-1/4
P24G.04/08	P24G.3/16-1/2
P24G.04/10	P24G.3/16-3/8
P24G.04/12	P24G.3/16-1/2
P24G.04/14	P24G.3/16-5/8
P24G.04/16	P24G.3/16-3/4
P24G.04/18	P24G.3/16-7/8
P24G.04/20	P24G.3/16-1
P24G.04/22	P24G.3/16-1 1/8
P24G.04/24	P24G.3/16-1 1/4
P24G.04/26	P24G.3/16-1 1/2
P24G.04/28	P24G.3/16-1 3/8
P24G.04/30	P24G.3/16-1 1/2
P24G.04/32	P24G.3/16-1 3/4
P24G.04/34	P24G.3/16-1 7/8
P24G.04/36	P24G.3/16-2
P24G.04/38	P24G.3/16-2 1/8
P24G.04/40	P24G.3/16-2 1/4
P24G.04/42	P24G.3/16-2 1/2
P24G.04/44	P24G.3/16-2 3/8
P24G.04/46	P24G.3/16-2 1/2
P24G.04/48	P24G.3/16-2 3/4
P24G.04/50	P24G.3/16-2 3/8
P24G.04/52	P24G.3/16-2 7/8
P24G.04/54	P24G.3/16-3
P24G.04/56	P24G.3/16-3 1/8
P24G.04/58	P24G.3/16-3 1/4
P24G.04/60	P24G.3/16-3 1/2
P24G.04/62	P24G.3/16-3 3/8
P24G.04/64	P24G.3/16-3 1/2
P24G.04/66	P24G.3/16-3 3/4
P24G.04/68	P24G.3/16-3 7/8
P24G.04/70	P24G.3/16-4
P24G.04/72	P24G.3/16-4 1/8
P24G.04/74	P24G.3/16-4 1/4
P24G.04/76	P24G.3/16-4 1/2
P24G.04/78	P24G.3/16-4 3/8
P24G.04/80	P24G.3/16-4 1/2
P24G.04/82	P24G.3/16-4 3/4
P24G.04/84	P24G.3/16-4 7/8
P24G.04/86	P24G.3/16-5
P24G.04/88	P24G.3/16-5 1/8
P24G.04/90	P24G.3/16-5 1/4
P24G.04/92	P24G.3/16-5 1/2
P24G.04/94	P24G.3/16-5 3/8
P24G.04/96	P24G.3/16-5 1/2
P24G.04/98	P24G.3/16-5 3/4
P24G.04/100	P24G.3/16-5 3/8

P25 Distributeur

Métrique	Impériale
P25.04/05	P25.3/16-1/8
P25.04/06	P25.3/16-1/4
P25.04/08	P25.3/16-1/2
P25.04/10	P25.3/16-3/8
P25.04/12	P25.3/16-1/2
P25.04/14	P25.3/16-5/8
P25.04/16	P25.3/16-3/4
P25.04/18	P25.3/16-7/8
P25.04/20	P25.3/16-1
P25.04/22	P25.3/16-1 1/8
P25.04/24	P25.3/16-1 1/4
P25.04/26	P25.3/16-1 1/2
P25.04/28	P25.3/16-1 3/8
P25.04/30	P25.3/16-1 1/2
P25.04/32	P25.3/16-1 3/4
P25.04/34	P25.3/16-1 7/8
P25.04/36	P25.3/16-2
P25.04/38	P25.3/16-2 1/8
P25.04/40	P25.3/16-2 1/4
P25.04/42	P25.3/16-2 1/2
P25.04/44	P25.3/16-2 3/8
P25.04/46	P25.3/16-2 1/2
P25.04/48	P25.3/16-2 3/4
P25.04/50	P25.3/16-2 3/8
P25.04/52	P25.3/16-2 7/8
P25.04/54	P25.3/16-3
P25.04/56	P25.3/16-3 1/8
P25.04/58	P25.3/16-3 1/4
P25.04/60	P25.3/16-3 1/2
P25.04/62	P25.3/16-3 3/8
P25.04/64	P25.3/16-3 1/2
P25.04/66	P25.3/16-3 3/4
P25.04/68	P25.3/16-3 7/8
P25.04/70	P25.3/16-4
P25.04/72	P25.3/16-4 1/8
P25.04/74	P25.3/16-4 1/4
P25.04/76	P25.3/16-4 1/2
P25.04/78	P25.3/16-4 3/8
P25.04/80	P25.3/16-4 1/2
P25.04/82	P25.3/16-4 3/4
P25.04/84	P25.3/16-4 7/8
P25.04/86	P25.3/16-5
P25.0	



SCORPION

Raccords acier inoxydable / Stainless Steel Fittings

* Les pièces peuvent différer de l'image sans préavis / Parts may vary from image without notice

Spécifications / Specifications

Vide / Negatif Pressure : 29,5 "Hg

Température / Temperature Range : -28°C a/to 215°C (-20°F a/to 420°F)

Pression / Working Pressure Range : 290 PSI

Matériel / Metal body material: 316 Stainless Steel

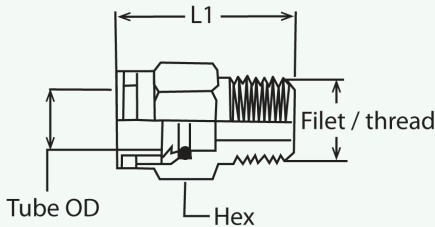
O-ring : Viton

Grip Ring : 301 Stainless steel

Release ring: 316 Stainless Steel

Média : Air comprimé/ gaz inertes Compressed Air / inert gases

Droit Métrique- Male / Metric Male Straight -316 Stainless Steel



Code / Part Number	Tube Metric OD	Filet/ Thread BSPT (R)	Hex	Dimension/ Length (L1)	Poids / Weight
P1.04.M5.SS	4	M5	10mm	0.78"(19.9mm)	0.32oz(9.07g)
P1.04.1/8.SS	4	1/8	10mm	0.81"(20.5mm)	0.32oz(9.07g)
P1.04.1/4.SS	4	1/4	14mm	0.94"(23.9mm)	0.64oz(18.1g)
P1.06.M5.SS	6	M5	12mm	0.81"(20.5mm)	0.48oz(13.6g)
P1.06.1/8.SS	6	1/8	12mm	0.81"(20.5mm)	0.48oz(13.6g)
P1.06.1/4.SS	6	1/4	14mm	0.97"(24.7mm)	0.64oz(18.1g)
P1.06.3/8.SS	6	3/8	11/16"	0.96"(24.4mm)	0.96oz(27.2g)
P1.08.1/8.SS	8	1/8	14mm	1.08"(27.5mm)	0.64oz(18.1g)
P1.08.1/4.SS	8	1/4	14mm	1"(25.4mm)	0.64oz(18.1g)
P1.08.3/8.SS	8	3/8	17mm	1.08"(27.5mm)	0.96oz(27.2g)
P1.10.1/8.SS	10	1/8	17mm	1.15"(29.2mm)	N/A
P1.10.1/4.SS	10	1/4	17mm	1.25"(31.7mm)	0.96oz(27.2fg)
P1.10.3/8.SS	10	3/8	17mm	1.25"(31.7mm)	0.96oz(27.2fg)
P1.10.1/2.SS	10	1/2	21mm	1.41"(35.7mm)	N/A
P1.12.1/8.SS	12	1/8	13/16"	1.27"(32.4mm)	0.96oz(27.2g)
P1.12.1/4.SS	12	1/4	13/16"	1.37"(34.7mm)	1.28oz(36.2g)
P1.12.3/8.SS	12	3/8	19mm	1.37"(34.7mm)	1.60oz(45.3g)
P1.12.1/2.SS	12	1/2	21mm	1.52"(38.7mm)	1.92oz(54.4g)



SCORPION

Raccords acier inoxydable / Stainless Steel Fittings

* Les pièces peuvent différer de l'image sans préavis / Parts may vary from image without notice

Spécifications / Specifications

Vide / Negatif Pressure : 29,5 "Hg

Température / Temperature Range : -28°C a/to 215°C (-20°F a/to 420°F)

Pression / Working Pressure Range : 290 PSI

Matériel / Metal body material: 316 Stainless Steel

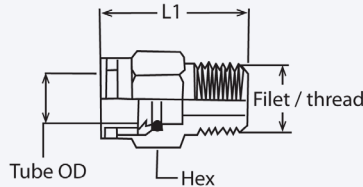
O-ring : Viton

Grip Ring : 301 Stainless steel

Release ring: 316 Stainless Steel

Média : Air comprimé/ gaz inertes Compressed Air / inert gases

Droit Impérial- Male / Imperial Male Straight -316 Stainless Steel



Code / Part Number	Tube OD	Filet/ Thread NPT	Hex	Dimension/Length (L1)	Poids / Weight
P1.5/32 x 10-32.SS	5/32	10-32	7/16"	0.92"(23.3mm)	0.32oz(9.07g)
P1.5/32 x 1/8.SS	5/32	1/8	10mm	0.81"(20.5mm)	0.32oz(9.07g)
P1.5/32 x 1/4.SS	5/32	1/4	14mm	0.94"(23.9mm)	0.32oz(9.07g)
P1.5/32 x 3/8.SS	5/32	3/8	11/16"	1"(25.4mm)	0.32oz(9.07g)
P1.3/16 x 1/8.SS	3/16	1/8	7/16"	0.85"(21.5mm)	0.48oz(13.6g)
P1.3/16 x 1/4.SS	3/16	1/4	9/16"	0.90"(22.8mm)	0.48oz(13.6g)
P1.1/4 x 10-32.SS	1/4	10-32	1/2"	0.97"(24.6mm)	0.32oz(9.07g)
P1.1/4 x 1/8.SS	1/4	1/8	12mm	0.81"(20.7mm)	0.48oz(13.6g)
P1.1/4 x 1/4.SS	1/4	1/4	14mm	0.97"(24.7mm)	0.64oz(18.1g)
P1.1/4 x 3/8.SS	1/4	3/8	1/16"	0.96"(24.3mm)	0.96oz(27.2g)
P1.5/16 x 1/8.SS	5/16	1/8	14mm	1.08"(27.5mm)	0.64oz(18.1g)
P1.5/16 x 1/4.SS	5/16	1/4	14mm	1"(25.4mm)	0.64oz(18.1g)
P1.5/16 x 3/8.SS	5/16	3/8	17mm	1.08"(27.5mm)	1.12oz(31.7g)
P1.5/16 x 1/2.SS	5/16	1/2	21mm	1.20"(30.5mm)	1.44oz(41.6g)
P1.3/8 x 1/8.SS	3/8	1/8	17mm	1.15"(29.2mm)	0.80oz(22.6g)
P1.3/8 x 1/4.SS	3/8	1/4	17mm	1.25"(31.7mm)	0.96oz(27.2g)
P1.3/8 x 3/8.SS	3/8	3/8	19mm	1.25"(31.7mm)	1.12oz(31.7g)
P1.3/8 x 1/2.SS	3/8	1/2	22mm	1.41"(35.7mm)	1.44oz(41.6g)
P1.1/2 x 1/4.SS	1/2	1/4	19mm	1.37"(34.7mm)	1.44oz(41.6g)
P1.1/2 x 3/8.SS	1/2	3/8	19mm	1.37"(34.7mm)	1.44oz(41.6g)
P1.1/2 x 1/2.SS	1/2	1/2	22mm	1.52"(38.7mm)	1.92oz(54.4g)



SCORPION

Raccords acier inoxydable / Stainless Steel Fittings

* Les pièces peuvent différer de l'image sans préavis / Parts may vary from image without notice

Spécifications / Specifications

Vide / Negatif Pressure : 29,5 "Hg

Température / Temperature Range : -28°C a/to 215°C (-20°F a/to 420°F)

Pression / Working Pressure Range : 290 PSI

Matériel / Metal body material: 316 Stainless Steel

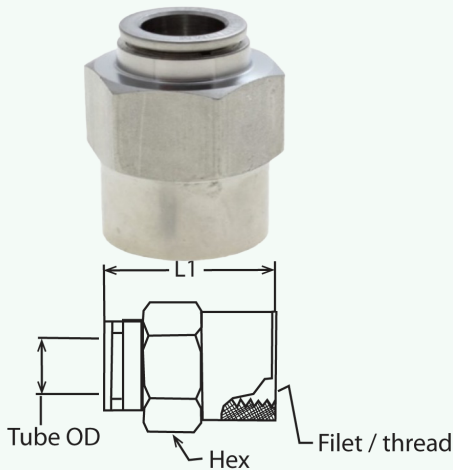
O-ring : Viton

Grip Ring : 301 Stainless steel

Release ring: 316 Stainless Steel

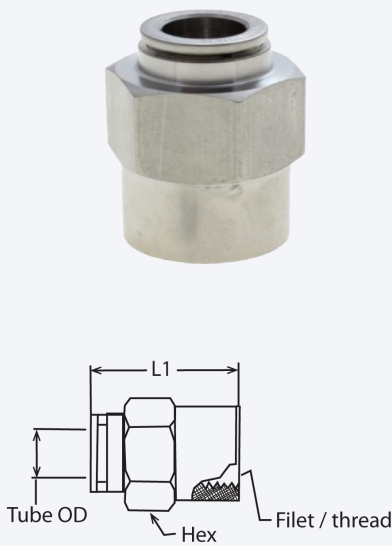
Média : Air comprimé/ gaz inertes Compressed Air / inert gases

Droit Métrique Femelle / Metric Female Straight -316 Stainless Steel



Code / Part Number	Tube OD	Filet / Thread BSPT (R)	Hex	Dimension / Length (L1)	Poids / Weight
P2.04.1/8.SS	4	1/8	14mm	0.96"(24.4mm)	8oz(13.6g)
P2.06.1/8.SS	6	1/8	14mm	1.08"(27.4mm)	0.48oz(13.6g)
P2.06.1/4.SS	6	1/4	17mm	1.09"(27.7mm)	0.96oz(27.2g)
P2.08.1/4.SS	8	1/4	17mm	1.17"(29.8mm)	1.12oz(31.7g)
P2.08.3/8.SS	8	3/8	19mm	1.21"(30.8mm)	1.60oz(45.3g)
P2.10.1/4.SS	10	1/4	17mm	1.26"(31.9mm)	1.60oz(45.3g)
P2.10.3/8.SS	10	3/8	19mm	1.30"(32.9mm)	2.40oz(68g)

Droit Impérial Femelle / Imperial Female Straight -316 Stainless Steel



Code / Part Number	Tube OD	Filet / Thread NPT	Hex	Dimension / Length (L1)	Poids / Weight
P2.5/32.1/8.SS	5/32	1/8	14mm	0.96"(24.4mm)	0.48oz(13.6g)
P2.3/16.1/8.SS	3/16	1/8	9/16"	1.11"(28.1mm)	0.18oz(5.10g)
P2.1/4.1/8.SS	1/4	1/8	14mm	0.97"(24.7mm)	0.48oz(13.6g)
P2.1/4.1/4.SS	1/4	1/4	17mm	1.09"(27.7mm)	0.96oz(27.2g)
P2.5/16.1/4.SS	5/16	1/4	17mm	1.17"(29.8mm)	1.12oz(31.7g)
P2.5/16.3/8.SS	5/16	3/8	19mm	1.21"(30.8mm)	1.60oz(45.3g)
P2.3/8.1/4.SS	3/8	1/4	17mm	1.26"(31.9mm)	1.60oz(45.3g)
P2.3/8.3/8.SS	3/8	3/8	19mm	1.30"(32.9mm)	1.60oz(45.3g)
P2.3/8.1/2.SS	3/8	1/2	24mm	1.41"(35.9mm)	2.40oz(68g)
P2.1/2.3/8.SS	1/2	3/8	21mm	1.38"(35.1mm)	2.40oz(68g)
P2.1/2.1/2.SS	1/2	1/2	24mm	1.50"(38.1mm)	3.20oz(90.7g)



SCORPION

Raccords acier inoxydable / Stainless Steel Fittings

* Les pièces peuvent différer de l'image sans préavis / Parts may vary from image without notice

Spécifications / Specifications

Vide / Negatif Pressure : 29,5 "Hg

Température / Temperature Range : -28°C a/to 215°C (-20°F a/to 420°F)

Pression / Working Pressure Range : 290 PSI

Matériel / Metal body material: 316 Stainless Steel

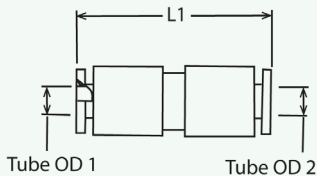
O-ring : Viton

Grip Ring : 301 Stainless steel

Release ring: 316 Stainless Steel

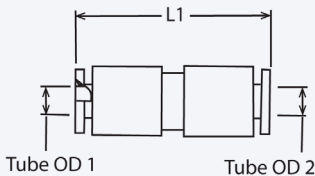
Média : Air comprimé/ gaz inertes Compressed Air / inert gases

Union Métrique / Metric Union -316 Stainless Steel



Code / Part Number	Tube 1 OD	Tube 2 OD	Dimension / Length (L1)	Poids / Weight
P3.04.SS	4	4	1.26" (32mm)	0.48oz(13.6g)
P3.06.SS	6	6	1.27" (32.3mm)	0.64oz(18.1g)
P3.06.04.SS	6	4	1.28" (32.6mm)	0.64oz(18.1g)
P3.08.SS	8	8	1.44" (36.6mm)	0.96oz(27.2g)
P3.08.06.SS	8	6	1.36" (34.6mm)	0.96oz(27.2g)
P3.10.SS	10	10	1.59" (40.3mm)	0.96oz(27.2g)
P3.10.06.SS	10	6	1.51" (38.4mm)	1.28oz(36.2g)
P3.10.08.SS	10	8	1.51" (38.4mm)	0.96oz(27.2g)
P3.12.SS	12	12	1.76" (44.7mm)	1.60oz(45.3g)
P3.12.10.SS	12	10	1.67" (42.5mm)	1.60oz(45.3g)

Union Impérial / Imperial Union -316 Stainless Steel



Code / Part Number	Tube 1 OD	Tube 2 OD	Dimension / Length (L1)	Poids / Weight
P3.1/4.SS	1/4	1/4	1.28" (32.6mm)	0.64oz(18.1g)
P3.1/4.5/32.SS	1/4	5/32	1.27" (32.3mm)	0.64oz(18.1g)
P3.3/8.SS	3/8	3/8	1.51" (38.4mm)	1.44oz(27.2g)
P3.3/8.5/16.SS	3/8	5/16	1.36" (34.5mm)	0.80oz(22.6g)
P3.5/16.1/4.SS	5/16	1/4	1.36" (34.6mm)	N/A
P3.1/2.SS	1/2	1/2	1.76" (44.7mm)	1.60oz(45.3g)
P3.1/2.3/8.SS	1/2	3/8	1.67" (42.5mm)	1.44oz(27.2g)



SCORPION

Raccords acier inoxydable / Stainless Steel Fittings

* Les pièces peuvent différer de l'image sans préavis / Parts may vary from image without notice

Spécifications / Specifications

Vide / Negatif Pressure : 29,5 "Hg

Température / Temperature Range : -28°C a/to 215°C (-20°F a/to 420°F)

Pression / Working Pressure Range : 290 PSI

Matériel / Metal body material: 316 Stainless Steel

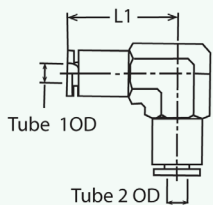
O-ring : Viton

Grip Ring : 301 Stainless steel

Release ring: 316 Stainless Steel

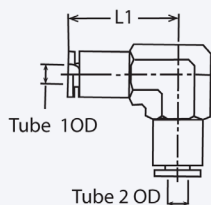
Média : Air comprimé/ gaz inertes Compressed Air / inert gases

Coude Métrique / Metric Elbow -316 Stainless Steel



Code / Part Number	Tube 1 OD	Tube 2 OD	Dimension / Length (L1)	Poids / Weight
P4.04.SS	4	4	0.72"(18.4mm)	0.80oz(22.6g)
P4.06.SS	6	6	0.74"(18.7mm)	0.96oz(27.2g)
P4.08.SS	8	8	0.79"(20mm)	1.28oz(36.2g)
P4.10.SS	10	10	0.97"(24.7mm)	2.24oz(63.5g)
P4.12.SS	12	12	1.07"(27.2mm)	2.88oz(81.6g)

Coude Impérial / Imperial Elbow -316 Stainless Steel



Code / Part Number	Tube 1 OD	Tube 2 OD	Dimension / Length (L1)	Poids / Weight
P4.1/4.SS	1/4	1/4	0.74"(18.7mm)	0.64oz(18.1g)
P4.3/8.SS	3/8	3/8	0.97"(24.7mm)	0.80oz(22.6g)
P4.1/2.SS	1/2	1/2	1.07"(27.2mm)	0.80oz(22.6g)



SCORPION

Raccords acier inoxydable / Stainless Steel Fittings

* Les pièces peuvent différer de l'image sans préavis / Parts may vary from image without notice

Spécifications / Specifications

Vide / Negatif Pressure : 29,5 "Hg

Température / Temperature Range : -28°C a/to 215°C (-20°F a/to 420°F)

Pression / Working Pressure Range : 290 PSI

Matériel / Metal body material: 316 Stainless Steel

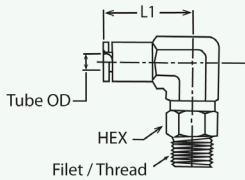
O-ring : Viton

Grip Ring : 301 Stainless steel

Release ring: 316 Stainless Steel

Média : Air comprimé/ gaz inertes Compressed Air / inert gases

Coude Métrique Mâle / Metric Elbow -316 Stainless Steel



Code / Part Number	Tube OD	Filet / Thread BSPT (R)	Hex	Dimension / Length (L1)	Poids / Weight
P4.04.M5.SS	4	M5	12mm	0.93"(23.5mm)	0.80oz(22.6g)
P4.04.1/8.SS	4	1/8	12mm	0.98"(25mm)	0.96oz(27.2g)
P4.04.1/4.SS	4	1/4	14mm	1.08"(27.5mm)	1.44oz(40.8g)
P4.06.M5.SS	6	M5	12mm	1"(25.4mm)	0.96oz(27.2g)
P4.06.1/8.SS	6	1/8	12mm	1.06"(27mm)	1.44oz(40.8g)
P4.06.1/4.SS	6	1/4	14mm	1.04"(26.5mm)	1.44oz(40.8g)
P4.06.3/8.SS	6	3/8	11/16"	1.29"(32.9mm)	1.76oz(49.8g)
P4.08.1/8.SS	8	1/8	12mm	1.14"(29mm)	1.44oz(40.8g)
P4.08.1/4.SS	8	1/4	14mm	1.24"(31.5mm)	1.76oz(49.8g)
P4.08.3/8.SS	8	3/8	17mm	1.38"(35mm)	2.08oz(58.9g)
P4.10.1/8.SS	10	1/8	17mm	1.44"(36.5mm)	1.76oz(49.8g)
P4.10.1/4.SS	10	1/4	17mm	1.56"(39.5mm)	2.56oz(72.5g)
P4.10.3/8.SS	10	3/8	17mm	1.56"(39.5mm)	2.72oz(77.1g)
P4.10.1/2.SS	10	1/2	21mm	1.67"(42.5mm)	2.72oz(77.1g)
P4.12.1/8.SS	12	1/8	13/16"	1.46"(37.3mm)	3.20oz(90.7g)
P4.12.1/4.SS	12	1/4	17mm	1.65"(42mm)	3.52oz(99.7g)
P4.12.3/8.SS	12	3/8	17mm	1.65"(42mm)	3.84oz(108g)
P4.12.1/2.SS	12	1/2	21mm	1.77"(45mm)	4.48oz(127g)



SCORPION

Raccords acier inoxydable / Stainless Steel Fittings

* Les pièces peuvent différer de l'image sans préavis / Parts may vary from image without notice

Spécifications / Specifications

Vide / Negatif Pressure : 29,5 "Hg

Température / Temperature Range : -28°C a/to 215°C (-20°F a/to 420°F)

Pression / Working Pressure Range : 290 PSI

Matériel / Metal body material: 316 Stainless Steel

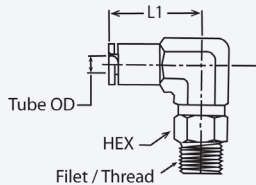
O-ring : Viton

Grip Ring : 301 Stainless steel

Release ring: 316 Stainless Steel

Média : Air comprimé/ gaz inertes Compressed Air / inert gases

Coude Impérial Mâle / Imperial Elbow -316 Stainless Steel



Code / Part Number	Tube OD	Filet / Thread NPT	Hex	Dimension / Length (L1)	Poids / Weight
P4.1/4.1/8.SS	1/4	1/8	12mm	1.06''(27mm)	1.12oz(32.6g)
P4.1/4.1/4.SS	1/4	1/4	14mm	1.04''(26.5mm)	1.60oz(45.3g)
P4.1/4.3/8.SS	1/4	3/8	1/16''	1.30''(33mm)	2.24oz(63.5g)
P4.1/4.1/2.SS	1/4	1/2	N/A	N/A	N/A
P4.5/16.1/8.SS	5/16	1/8	12mm	1.14''(29mm)	1.92oz(54.4g)
P4.5/16.1/4.SS	5/16	1/4	14mm	1.24''(31.5mm)	2.24oz(63.5g)
P4.5/16.3/8.SS	5/16	3/8	17mm	1.38''(35mm)	2.56oz(72.5g)
P4.3/8.1/8.SS	3/8	1/8	17mm	1.44''(36.5mm)	2.40oz(68g)
P4.3/8.1/4.SS	3/8	1/4	17mm	1.56''(39.5mm)	2.72oz(77.1g)
P4.3/8.3/8.SS	3/8	3/8	19mm	1.56''(39.5mm)	2.88oz(81.6g)
P4.3/8.1/2.SS	3/8	1/2	22mm	1.67''(42.5mm)	3.20oz(90.7g)
P4.1/2.1/4.SS	1/2	1/4	17mm	1.65''(42mm)	3.68oz(104g)
P4.1/2.3/8.SS	1/2	3/8	19mm	1.65''(42mm)	3.84oz(108g)
P4.1/2.1/2.SS	1/2	1/2	22mm	1.77''(45mm)	4.48oz(127g)



SCORPION

Raccords acier inoxydable / Stainless Steel Fittings

* Les pièces peuvent différer de l'image sans préavis / Parts may vary from image without notice

Spécifications / Specifications

Vide / Negatif Pressure : 29,5 "Hg

Température / Temperature Range : -28°C a/to 215°C (-20°F a/to 420°F)

Pression / Working Pressure Range : 290 PSI

Matériel / Metal body material: 316 Stainless Steel

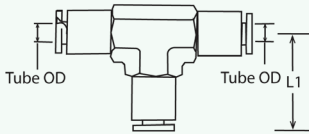
O-ring : Viton

Grip Ring : 301 Stainless steel

Release ring: 316 Stainless Steel

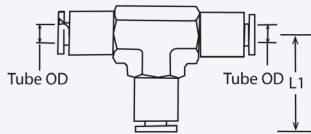
Média : Air comprimé/ gaz inertes Compressed Air / inert gases

"T" Métrique / Metric "T" -316 Stainless Steel



Code/ Part Number	Tube OD	Tube OD	Tube OD	Dimension / Length (L1)	Poids / Weight
P5.04.SS	4	4	4	1.45"(36.8mm)	0.96oz(27.2g)
P5.06.SS	6	6	6	0.74"(18.7mm)	1.44oz(40.8g)
P5.08.SS	8	8	8	0.79"(20mm)	1.44oz(40.8g)
P5.10.SS	10	10	10	0.97"(24.7mm)	2.08oz(58.9g)
P5.12.SS	12	12	12	1.07"(27.2mm)	2.88oz(81.6g)

"T" Impérial / Imperial "T" -316 Stainless Steel



Code/ Part Number	Tube OD	Tube OD	Tube OD	Dimension / Length (L1)	Poids / Weight
P5.1/4.SS	1/4	1/4	1/4	0.74"(18.7mm)	1.28oz(36.2g)
P5.3/8.SS	3/8	3/8	3/8	0.97"(24.7mm)	2.72oz(77.1g)
P5.1/2.SS	1/2	1/2	1/2	1.07"(27.2mm)	3.36oz(95.2g)



SCORPION

Raccords acier inoxydable / Stainless Steel Fittings

* Les pièces peuvent différer de l'image sans préavis / Parts may vary from image without notice

Spécifications / Specifications

Vide / Negatif Pressure : 29,5 "Hg

Température / Temperature Range : -28°C a/to 215°C (-20°F a/to 420°F)

Pression / Working Pressure Range : 290 PSI

Matériel / Metal body material: 316 Stainless Steel

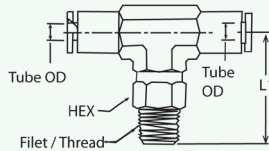
O-ring : Viton

Grip Ring : 301 Stainless steel

Release ring: 316 Stainless Steel

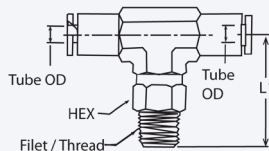
Média : Air comprimé/ gaz inertes Compressed Air / inert gases

"T" Métrique / Metric "T" -316 Stainless Steel



Code / Part Number	Tube OD	Filet / Thread BSPT (R)	Hex	Dimension / Length (L1)	Poids / Weight
P5.04.1/8.SS	4	1/8	12mm	1.45"(36.8mm)	1.28oz(36.2g)
P5.04.1/4.SS	4	1/4	14mm	1.45"(36.8mm)	1.76oz(49.8g)
P5.06.1/8.SS	6	1/8	12mm	1.47"(37.4mm)	1.60oz(45.3g)
P5.06.1/4.SS	6	1/4	14mm	1.47"(37.4mm)	1.76oz(49.8g)
P5.08.1/4.SS	8	1/4	14mm	1.57"(40mm)	2.08oz(58.9g)
P5.08.3/8.SS	8	3/8	17mm	1.57"(40mm)	2.56oz(72.5g)
P5.10.1/4.SS	10	1/4	17mm	1.79"(45.4mm)	3.04oz(86.1g)
P5.10.3/8.SS	10	3/8	17mm	1.79"(45.4mm)	3.36oz(95.2g)
P5.12.1/4.SS	12	1/4	17mm	2.14"(54.4mm)	3.68oz(104g)
P5.12.3/8.SS	12	3/8	17mm	2.14"(54.4mm)	4oz(113g)
P5.12.1/2.SS	12	1/2	21mm	2.14"(54.4mm)	4.32oz(122g)

"T" Impérial / Imperial "T" -316 Stainless Steel



Code / Part Number	Tube OD	Filet / Thread NPT	Hex	Dimension / Length (L1)	Poids / Weight
P5.1/4.1/8.SS	1/4	1/8	12mm	1.47"(37.4mm)	1.60oz(45.3g)
P5.1/4.1/4.SS	1/4	1/4	14mm	1.47"(37.4mm)	1.76oz(49.8g)
P5.3/8.1/4.SS	3/8	1/4	17mm	1.79"(45.4mm)	3.20oz(90.7g)
P5.3/8.3/8.SS	3/8	3/8	19mm	1.79"(45.4mm)	3.52oz(99.7g)
P5.1/2.1/4.SS	1/2	1/4	19mm	2.14"(54.4mm)	4.32oz(122g)
P5.1/2.3/8.SS	1/2	3/8	22mm	2.14"(54.4mm)	5.12oz(145g)
P5.1/2.1/2.SS	1/2	1/2	N/A	N/A	N/A

561, Rue Édouard, Granby, QC J2G 3Z5 TEL.: 1-800-665-3565

www.mscorpion.com | www.scorpionmfg.com



SCORPION

Raccords acier inoxydable / Stainless Steel Fittings

* Les pièces peuvent différer de l'image sans préavis / Parts may vary from image without notice

Spécifications / Specifications

Vide / Negatif Pressure : 29,5 "Hg

Température / Temperature Range : -28°C a/to 215°C (-20°F a/to 420°F)

Pression / Working Pressure Range : 290 PSI

Matériel / Metal body material: 316 Stainless Steel

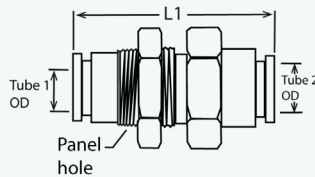
O-ring : Viton

Grip Ring : 301 Stainless steel

Release ring: 316 Stainless Steel

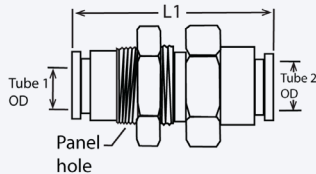
Média : Air comprimé/ gaz inertes Compressed Air / inert gases

Métrique Passe-Parois / Metric Bulkhead Union - 316 Stainless Steel



Code / Part Number	Tube 1 OD	Tube 2 OD	Trou/ Panel hole	Dimension / Length (L1)	Poids / Weight
P10.04.SS	4	4	0.47"(12mm)	1.26"(32mm)	0,80oz(22.7g)
P10.06.SS	6	6	0.66"(17mm)	1.28"(32.6mm)	1.43oz(40.8g)
P10.08.SS	8	8	0.62"(18mm)	1.44"(36.6mm)	2.07oz(58.9g)
P10.10.SS	10	10	1.59"(40.3mm)	1.59"(40.3mm)	2.71oz(77.1g)
P10.12.SS	12	12	1.76"(44.7mm)	1.76"(44.7mm)	3.35oz(95.2g)

Impérial Passe-Parois / Imperial Bulkhead Union - 316 Stainless Steel



Code / Part Number	Tube 1 OD	Tube 2 OD	Trou/ Panel hole	Dimension / Length (L1)	Poids / Weight
P10.1/4.SS	1/4	1/4	0.66"(17mm)	1.47"(37.4mm)	1.43oz(40.8g)
P10.3/8.SS	3/8	3/8	1.59"(40.3mm)	1.47"(37.4mm)	2.39oz(68g)
P10.1/2.SS	1/2	1/2	1.76"(44.7mm)	1.79"(45.4mm)	3.51oz(99.7g)



SCORPION

Raccordement Haut Débit / High Flow Connector

* Les pièces peuvent différer de l'image sans préavis / Parts may vary from image without notice

Spécifications / Specifications

Fluide / Fluid : Air et Vide - Air and Vacuum
Pression / Working Pressure Range : 0-150 PSI

Vide / Negatif Pressure : -29"Hg
Température / Temperature Range : 0°C a/to 60°C (32°F a/to -140°F)

Union Male-Male NPT / Adaptor Male-Male NPT * 2" Long



Part Number	Filet Male NPT / Thread Male NPT	Filet Male NPT / Thread Male NPT
A2.1.1.SP	1"	1"
A2.1.2.SP	1"	2"
A2.1.3.SP	1"	3"
A2.1-1/2.1-1/2.SP	1-1/2"	1-1/2"
A2.1-1/2.2.SP	1-1/2"	2"
A2.2.2.SP	2"	2"
A2.2.3.SP	2"	3"
A2.2.4.SP	2"	4"
A2.3.3.SP	3"	3"
A2.3.4.SP	3"	4"
A2.4.4.SP	4"	4"

Réducteur / Reducer Male-Female NPT



Part Number	Filet Male NPT / Thread Male NPT	Filet Femelle NPT / Thread Female NPT
A4.1-1/4.1.SP	1-1/4"	1"
A4.1-1/2.1.SP	1-1/2"	1"
A4.1-1/2.1-1/4.SP	1-1/2"	1-1/4"
A4.2.1.SP	2"	1"
A4.2.1-1/4.SP	2-1/4"	1-1/4"
A4.2.1-1/2.SP	2-1/2"	1-1/2"
A4.2-1/2.2.SP	2-1/2"	2"
A4.3.2.SP	3"	2"
A4.3.2-1/2.SP	3"	2-1/2"
A4.4.2.SP	4"	2"
A4.4.3.SP	4"	3"

Adapteur en "T" / Adaptor "T" Female NPT



Part Number	Filet Femelle NPT / Thread Female NPT	Filet Femelle NPT / Thread Female NPT
A11.1.SP	1"	1"
A11.1-1/4.SP	1-1/4"	1-1/4"
A11.1-1/2.SP	1-1/2"	1-1/2"
A11.2.SP	2"	2"
A11.2-1/2.SP	2-1/2"	2-1/2"
A11.3.SP	3"	3"
A11.4.SP	4"	4"



SCORPION

Raccordement Haut Débit / High Flow Connector

* Les pièces peuvent différer de l'image sans préavis / Parts may vary from image without notice

Spécifications / Specifications

Fluide / Fluid : Air et Vide - Air and Vacuum

Vide / Negatif Pressure : -29"Hg

Pression / Working Pressure Range : 0-150 PSI

Température / Temperature Range : 0°C a/to 60°C (32°F a/to -140°F)

Adaptateur en Coude / Adaptor "ELBOW" Female NPT



Part Number	Filet Femelle NPT / Thread Female NPT	Filet Femelle NPT / Thread Female NPT
A9.1.SP	1"	1"
A9.1-1/4.SP	1-1/4"	1-1/4"
A9.1-1/2.SP	1-1/2"	1-1/2"
A9.2.SP	2"	2"

Barbillon / BARB Fitting Male NPT

* Série Métal / Metal series



Part Number	Tube	Filet Male NPT /Thread Male NPT
BM1.1.1	1"	1"
BM1.1-1/4.1-1/4	1-1/4"	1-1/4"
BM1.1-1/2.1-1/2	1-1/2"	1-1/2"
BM1.2.2	2"	2"
BM1.3.3	3"	3"
BM1.4.4	4"	4"

* Série Nylon / Nylon series



Part Number	Tube	Filet Male NPT /Thread Male NPT
BM1.1-1/4.1-1/4.N	1-1/4"	1-1/4"
BM1.1-1/2.1-1/2.N	1-1/2"	1-1/2"
BM1.2.2.N	2"	2"
BM1.3.3.N	3"	3"
BM1.4.4.N	4"	4"

Union / Adaptor Female-Female NPT



Part Number	Filet Femelle NPT / Thread Female NPT	Filet Femelle NPT / Thread Female NPT
A3.1.SP	1"	1"
A3.1-1/4.SP	1-1/4"	1-1/4"
A3.1-1/2.SP	1-1/2"	1-1/2"
A3.2.SP	2"	2"

561, Rue Édouard, Granby, QC J2G 3Z5 TEL.: 1-800-665-3565

www.mscorpion.com | www.scorpionmfg.com



SCORPION

Raccordement Haut Débit / High Flow Connector

* Les pièces peuvent différer de l'image sans préavis / Parts may vary from image without notice

Spécifications / Specifications

Fluide / Fluid : Air et Vide - Air and Vacuum

Pression / Working Pressure Range : 0-150 PSI

Vide / Negatif Pressure : -29"Hg

Température / Temperature Range : 0°C a/to 60°C (32°F a/to -140°F)

Collet Vissé / Collet



Part Number	Nominal	Min	Max
Collet.Visse.1	1"	0.69"	1.50"
Collet.Visse.1-1/4	1-1/4"	0.75"	1.75"
Collet.Visse.1-1/2	1-1/2"	1.06"	2.00"
Collet.Visse.1-3/4	1-3/4"	1.31"	2.25"
Collet.Visse.2	2"	1.56"	2.50"
Collet.Visse.2-1/4	2-1/4"	1.81"	2.75"
Collet.Visse.2-1/2	2-1/2"	2.06"	3.00"
Collet.Visse.2-3/4	2-3/4"	2.31"	3.25"
Collet.Visse.3	3"	2.56"	3.50"
Collet.Visse.3-1/4	3-1/4"	2.81"	3.75"
Collet.Visse.3-1/2	3-1/2"	3.06"	4.00"
Collet.Visse.3-3/4	3-3/4"	3.31"	4.25"
Collet.Visse.4	4"	2.50"	4.50"
Collet.Visse.4-1/2	4-1/2"	3.00"	5.00"

*Tuyau transparent avec renforcement pour vide / Reinforced Vacuum Tubing - Minimum 25'



Part Number
FLEX.1
FLEX.1-1/4
FLEX.1-1/2
FLEX.2
FLEX.2-1/2
FLX-T.PU..3
FLEX.4

* Disponible en Inox (Contactez nous) / Available in Stainless (Contact us)

Informations techniques de nos produits / Technical features of our products

- Approuvé pour la conformité avec la FDA pour les purificateurs d'eau et les boissons.
- Ils sont adaptés à l'eau potable grâce aux certifications ANSI / NSF 61.
- Aucun risque de fuite grâce à la fonction d'étanchéité supérieure.
- Processus d'assemblage et d'emballage en salle blanche.
- Approved for compliance with the FDA in water purifiers and beverages.
- Acceptable for drinking water by ANSI / NSF 61 certifications.
- Superior sealing for no leakage risk.
- Clean room assembly and packaging processes.

Normes FDA / US Food and Drug Administration (FDA)

Les produits mentionnés ci-dessus sont conformes aux réglementations FDA applicables en matière de contact alimentaire, sous réserve des limitations énumérées ci-dessous. Les produits sont formulés à partir d'une résine à base de polyacétal conforme à la norme CFR, Titre 21, 177.2470 pour une utilisation dans les applications en contact avec les aliments. Les additifs inclus dans le matériau ci-dessus sont conformes aux réglementations FDA spécifiques et appropriées. / *The above mentioned products are compliant with applicable FDA regulations for food contact subject to the limitations listed below. The products are formulated using polyacetal base resin that is compliant for use in food contact applications complying with CFR, Title 21, 177.2470. Additives included in the above material comply with appropriate, specific FDA Regulations.*

Limitations:

Type d'aliment / *Type of food* : Tous types d'aliments à l'exception des aliments contenant 15 % ou plus d'alcool. / *All food types except foods containing 15% or more alcohol.* Conditions d'utilisation / *Condition of usage*: La température d'utilisation ne doit pas dépasser 250 deg F selon 21 CFR 177.2470. / *Usage temperature shall not exceed 250 deg F per 21 CFR 177.2470.*

Application : Articles à usage répété selon 21 CFR 177.2470. / *Repeated-use articles per 21 CFR 177.2470.*

Spécifications / Specifications

Type d'usage / *Fluid* : Eau, boissons / *Water, beverages*

Température / *Temperature range* : -0°C à/to 65°C (-34°F à/to 140°F)

Pression de travail / *Working pressure range* : 0-230 PSI (0~16Kgf/cm²(0~1,570kPa)

Pression maximale d'utilisation en fonction de la température / Maximum usable pressure by temperature

	5/32" (4mm)	3/16" (5mm)	1/4" (6mm)	5/16" (8mm)	3/8" (10mm)	1/2" (12mm)
1°C (34°F)	16 bar (230PSI)	16 bar (230PSI)	16 bar (230PSI)	16 bar (230PSI)	11 bar (170PSI)	11 bar (170PSI)
20°C (68°F)	16 bar (230PSI)	16 bar (230PSI)	16 bar (230PSI)	16 bar (230PSI)	11 bar (170PSI)	11 bar (170PSI)
65°C (150°F)	10 bar (150PSI)	10 bar (150PSI)	10 bar (150PSI)	10 bar (150PSI)	7 bar (100PSI)	7 bar (100PSI)

Couple maximal pour le filetage / Maximum torque for thread size

Filet / Thread	1/8"	1/4"	3/8"	1/2"
Maximum	1.5Nm	1.5Nm	3.0Nm	3.0Nm



SCORPION

561, Rue Édouard, Granby, QC J2G 3Z5
 TEL.: 1-800-665-3565
www.mscorpion.com
www.scorpionmfg.com



SCORPION

Raccords pour liquides / Fluid Fittings

* Les pièces peuvent différer de l'image sans préavis / Parts may vary from image without notice

Spécifications / Specifications

Type d'usage / Fluid : Eau, boissons / Water, beverages

Température / Temperature range : -0°C à/to 65°C (-34°F à/to 140°F)

Pression de travail / Working pressure range : 0-230 PSI (0~16Kgf/cm²(0~1,570kPa)

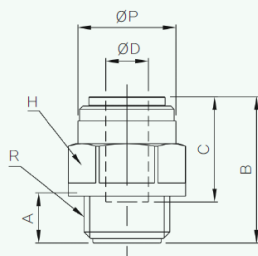
Pression maximale d'utilisation en fonction de la température / Maximum usable pressure by temperature

	5/32" (4mm)	3/16" (5mm)	1/4" (6mm)	5/16" (8mm)	3/8" (10mm)	1/2" (12mm)
1°C (34°F)	16 bar (230PSI)	16 bar (230PSI)	16 bar (230PSI)	16 bar (230PSI)	11 bar (170PSI)	11 bar (170PSI)
20°C (68°F)	16 bar (230PSI)	16 bar (230PSI)	16 bar (230PSI)	16 bar (230PSI)	11 bar (170PSI)	11 bar (170PSI)
65°C (150°F)	10 bar (150PSI)	10 bar (150PSI)	10 bar (150PSI)	10 bar (150PSI)	7 bar (100PSI)	7 bar (100PSI)

Couple maximal pour le filetage / Maximum torque for thread size

Filet /Thread	1/8"	1/4"	3/8"	1/2"
Maximum	1.5Nm	1.5Nm	3.0Nm	3.0Nm

Droit métrique, filet G mâle/ Metric straight, male G thread



Modèle / Model	øD	øP	A	B	C	H (mm)	R(BSPP,G)	Poids/weight (g)
P1GW.04.1/8	04	13	6	22.85	13.45	15.88 (5/8)	1/8	3.88
P1GW.04.1/4	04	13	7.2	21.85	13.45	17.46 (11/16)	1/4	4.57
P1GW.06.1/8	06	15	6	23.1	15.8	15.88	1/8	3.86
P1GW.06.1/4	06	15	7	21.9	15.8	15.88	1/4	4.07
P1GW.08.1/8	08	17.7	6	26.3	17.3	19.05 (3/4)	1/8	6.01
P1GW.08.1/4	08	17.7	7.2	23	17.3	19.05 (3/4)	1/4	5.31
P1GW.08.3/8	08	17.7	8.2	24	17.3	19.05 (3/4)	3/8	6.51
P1GW.10.1/4	10	20	7.2	28.7	18.6	19.05	1/4	6.8
P1GW.10.3/8	10	20	8.2	27.7	18.6	22.22	3/8	9
P1GW.10.1/2	10	20	8.7	27.7	18.6	22.22	1/2	11.1



SCORPION

Raccords pour liquides / Fluid Fittings

* Les pièces peuvent différer de l'image sans préavis / Parts may vary from image without notice

Spécifications / Specifications

Type d'usage / Fluid : Eau, boissons / Water, beverages

Température / Temperature range : -0°C à/ to 65°C (-34°F à/ to 140°F)

Pression de travail / Working pressure range : 0-230 PSI (0~16Kgf/cm²(0~1,570kPa)

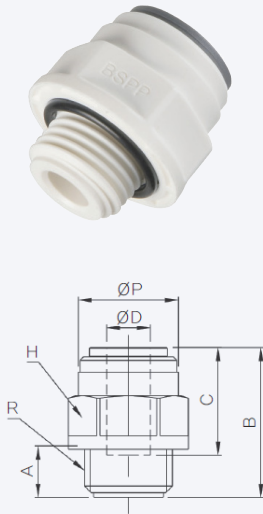
Pression maximale d'utilisation en fonction de la température / Maximum usable pressure by temperature

	5/32" (4mm)	3/16" (5mm)	1/4" (6mm)	5/16" (8mm)	3/8" (10mm)	1/2" (12mm)
1°C (34°F)	16 bar (230PSI)	16 bar (230PSI)	16 bar (230PSI)	16 bar (230PSI)	11 bar (170PSI)	11 bar (170PSI)
20°C (68°F)	16 bar (230PSI)	16 bar (230PSI)	16 bar (230PSI)	16 bar (230PSI)	11 bar (170PSI)	11 bar (170PSI)
65°C (150°F)	10 bar (150PSI)	10 bar (150PSI)	10 bar (150PSI)	10 bar (150PSI)	7 bar (100PSI)	7 bar (100PSI)

Couple maximal pour le filetage / Maximum torque for thread size

Filet / Thread	1/8"	1/4"	3/8"	1/2"
Maximum	1.5Nm	1.5Nm	3.0Nm	3.0Nm

Droit impérial, filet G mâle / Imperial straight, male G thread



Modèle / Model	øD	øP	A	B	C	H(pouce/ inch)	R(BSPP,G)	Poids/ weight (g)
P1GW.5/32.1/8	5/32	13	6	22.85	13.45	15.88 (5/8)	1/8	3.88
P1GW.5/32.1/4	5/32	13	7.2	21.85	13.45	17.46 (11/16)	1/4	4.57
P1GW.3/16.1/8	3/16	13	14.4	22.9	14.4	15.88 (5/8)	1/8	4.083
P1GW.3/16.1/4	3/16	13	7.2	21.9	14.4	17.46 (11/16)	1/4	4.91
P1GW.1/4.1/8	1/4	15	6	23.4	16.1	15.88 (5/8)	1/8	3.69
P1GW.1/4.1/4	1/4	15	7.2	22.4	16.1	15.88 (5/8)	1/4	4.17
P1GW.5/16.1/8	5/16	17.7	6	26.3	17.3	19.05 (3/4)	1/8	6.01
P1GW.5/16.1/4	5/16	17.7	7.2	23	17.3	19.05 (3/4)	1/4	5.31
P1GW.5/16.3/8	5/16	17.7	8.2	24	17.3	19.05 (3/4)	3/8	6.51
P1GW.3/8.1/4	3/8	20	7.2	28.7	18.6	19.05 (3/4)	1/4	6.88
P1GW.3/8.3/8	3/8	20	8.2	27.7	18.6	22.22 (7/8)	3/8	9.13
P1GW.3/8.1/2	3/8	20	8.7	27.2	18.6	22.22 (7/8)	1/2	11.217
P1GW.1/2.3/8	1/2	23	8.2	32.2	22.5	22.22 (7/8)	3/8	9.74
P1GW.1/2.1/2	1/2	23	8.7	33.7	22.5	22.22 (7/8)	1/2	11.64



SCORPION

Raccords pour liquides / Fluid Fittings

* Les pièces peuvent différer de l'image sans préavis / Parts may vary from image without notice

Spécifications / Specifications

Type d'usage / Fluid : Eau, boissons / Water, beverages

Température / Temperature range : -0°C à/to 65°C (-34°F à/to 140°F)

Pression de travail / Working pressure range : 0-230 PSI (0~16Kgf/cm²(0~1,570kPa)

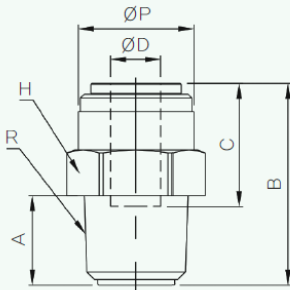
Pression maximale d'utilisation en fonction de la température / Maximum usable pressure by temperature

	5/32" (4mm)	3/16" (5mm)	1/4" (6mm)	5/16" (8mm)	3/8" (10mm)	1/2" (12mm)
1°C (34°F)	16 bar (230PSI)	16 bar (230PSI)	16 bar (230PSI)	16 bar (230PSI)	11 bar (170PSI)	11 bar (170PSI)
20°C (68°F)	16 bar (230PSI)	16 bar (230PSI)	16 bar (230PSI)	16 bar (230PSI)	11 bar (170PSI)	11 bar (170PSI)
65°C (150°F)	10 bar (150PSI)	10 bar (150PSI)	10 bar (150PSI)	10 bar (150PSI)	7 bar (100PSI)	7 bar (100PSI)

Couple maximal pour le filetage / Maximum torque for thread size

Filet /Thread	1/8"	1/4"	3/8"	1/2"
Maximum	1.5Nm	1.5Nm	3.0Nm	3.0Nm

Droit métrique, filet BSPT mâle/ Metric straight male BSPT thread



Modèle / Model	øD	øP	A	B	C	H (mm)	R(BSPT,R)	Poids/weight (g)
P1W.04.1/8	04	13	8.5	23.15	13.45	14.29 (9/16)	1/8	3.03
P1W.04.1/4	04	13	11.7	25.85	13.45	15.88 (5/8)	1/4	4.31
P1W.06.1/8	06	15	8.5	24.9	15.8	15.88	1/8	3.61
P1W.06.1/4	06	15	11.7	26.1	15.8	15.88	1/4	4.15
P1W.06.3/8	06	15	12.7	25.6	15.8	19.05	3/8	5.37
P1W.08.1/8	08	17.7	8.5	27.3	17.3	19.05 (3/4)	1/8	4.8
P1W.08.1/4	08	17.7	11.7	25.5	17.3	19.05 (3/4)	1/4	6.04
P1W.08.3/8	08	17.7	12.7	26.5	17.3	19.05(3/4)	3/8	5.84
P1W.10.1/8	10	20	10.5	29.5	18.6	20.64	1/8	6.7
P1W.10.1/4	10	20	11.7	31.2	18.6	20.6	1/4	7
P1W.10.3/8	10	20	12.7	29.2	18.6	20.6	3/8	7.3
P1W.10.1/2	10	20	15.9	32.4	18.6	22.23	1/2	10.6
P1W.12.3/8	12	23	12.7	35.7	22.5	24.61	3/8	12.1
P1W.12.1/2	12	23	15.9	34.9	22.5	24.61	1/2	13



SCORPION

Raccords pour liquides / Fluid Fittings

* Les pièces peuvent différer de l'image sans préavis / Parts may vary from image without notice

Spécifications / Specifications

Type d'usage / Fluid : Eau, boissons / Water, beverages

Température / Temperature range : -0°C à/to 65°C (-34°F à/to 140°F)

Pression de travail / Working pressure range : 0-230 PSI (0~16Kgf/cm²(0~1,570kPa)

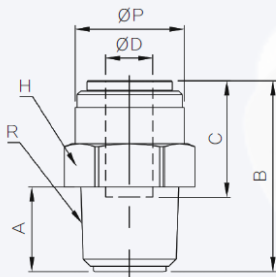
Pression maximale d'utilisation en fonction de la température / Maximum usable pressure by temperature

	5/32" (4mm)	3/16" (5mm)	1/4" (6mm)	5/16" (8mm)	3/8" (10mm)	1/2" (12mm)
1°C (34°F)	16 bar (230PSI)	16 bar (230PSI)	16 bar (230PSI)	16 bar (230PSI)	11 bar (170PSI)	11 bar (170PSI)
20°C (68°F)	16 bar (230PSI)	16 bar (230PSI)	16 bar (230PSI)	16 bar (230PSI)	11 bar (170PSI)	11 bar (170PSI)
65°C (150°F)	10 bar (150PSI)	10 bar (150PSI)	10 bar (150PSI)	10 bar (150PSI)	7 bar (100PSI)	7 bar (100PSI)

Couple maximal pour le filetage / Maximum torque for thread size

Filet /Thread	1/8"	1/4"	3/8"	1/2"
Maximum	1.5Nm	1.5Nm	3.0Nm	3.0Nm

Droit impérial, filet NPT mâle/ Imperial straight male NPT thread



Modèle / Model	øD	øP	A	B	C	H (mm)	R(NPTF)	Poids/weight (g)
P1W.5/32.1/8	5/32	13	8.5	23.15	13.45	14.29 (9/16)	1/8	3.03
P1W.5/32.1/4	5/32	13	11.7	25.85	13.45	15.88 (5/8)	1/4	4.31
P1W.3/16.1/8	3/16	13.5	8.5	23.2	14.4	15.88 (5/8)	1/8	3.37
P1W.1/4.1/8	1/4	15	8.5	24.7	16.1	15.88 (5/8)	1/8	3.54
P1W.1/4.1/4	1/4	15	11.7	26.4	16.1	15.88 (5/8)	1/4	4.23
P1W.1/4.3/8	1/4	15	12.7	25.9	16.1	19.05 (3/4)	3/8	5.46
P1W.1/4.1/2	1/4	15	15.9	29.1	16.1	22.23 (7/8)	1/2	8.67
P1W.5/16.1/8	5/16	17.7	8.5	27.3	17.3	19.05 (3/4)	1/8	4.8
P1W.5/16.1/4	5/16	17.7	11.7	25.5	17.3	19.05 (3/4)	1/4	6.04
P1W.5/16.3/8	5/16	17.7	12.7	26.5	17.3	19.05(3/4)	3/8	5.84
P1W.3/8.1/8	3/8	20	10.5	29.5	18.6	20.64 (13/16)	1/8	6.918
P1W.3/8.1/4	3/8	20	11.7	31.2	18.6	20.64 (13/16)	1/4	7.19
P1W.3/8.3/8	3/8	20	12.7	29.2	18.6	20.64 (13/16)	3/8	6.92
P1W.3/8.1/2	3/8	20	15.9	32.4	18.6	22.23 (7/8)	1/2	9.68
P1W.1/2.3/8	1/2	23	12.7	35.7	22.5	24.61 (31/32)	3/8	11.402
P1W.1/2.1/2	1/2	23	15.9	34.9	22.5	24.61 (31/32)	1/2	11.01



SCORPION

Raccords pour liquides / Fluid Fittings

* Les pièces peuvent différer de l'image sans préavis / Parts may vary from image without notice

Spécifications / Specifications

Type d'usage / Fluid : Eau, boissons / Water, beverages

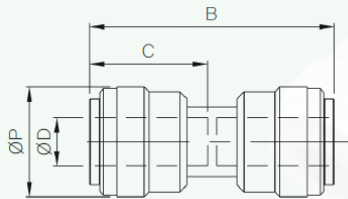
Température / Temperature range : -0°C à/à 65°C (-34°F à/to 140°F)

Pression de travail / Working pressure range : 0-230 PSI (0~16Kgf/cm²(0~1,570kPa)

Pression maximale d'utilisation en fonction de la température / Maximum usable pressure by temperature

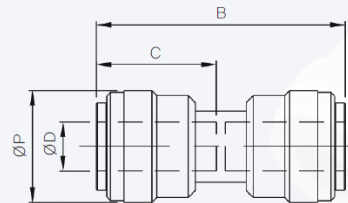
	5/32" (4mm)	3/16" (5mm)	1/4" (6mm)	5/16" (8mm)	3/8" (10mm)	1/2" (12mm)
1°C (34°F)	16 bar (230PSI)	16 bar (230PSI)	16 bar (230PSI)	16 bar (230PSI)	11 bar (170PSI)	11 bar (170PSI)
20°C (68°F)	16 bar (230PSI)	16 bar (230PSI)	16 bar (230PSI)	16 bar (230PSI)	11 bar (170PSI)	11 bar (170PSI)
65°C (150°F)	10 bar (150PSI)	10 bar (150PSI)	10 bar (150PSI)	10 bar (150PSI)	7 bar (100PSI)	7 bar (100PSI)

Union métrique / Metric union



Modèle / Model	øD	øP	B	C	Poids/weight (g)
P3W.04	04	13	28.1	13.45	2.76
P3W.06	06	15	32.8	15.8	4.28
P3W.08	08	17.7	36.1	17.3	6.23
P3W.10	10	20	39.2	18.6	7.814
P3W.12	12	23	47	22.5	14.18

Union impérial / Imperial union



Modèle / Model	øD	øP	B	C	Poids/weight (g)
P3W.5/32	5/32	13	28.1	13.45	2.76
P3W.3/16	3/16	13.5	30	14.4	3.239
P3W.1/4	1/4	15	33.4	16.1	4.14
P3W.5/16	5/16	17.7	36.1	17.3	6.23
P3W.3/8	3/8	20	41	18.6	8.25
P3W.1/2	1/2	23	47	22.5	12.33



SCORPION

Raccords pour liquides / Fluid Fittings

* Les pièces peuvent différer de l'image sans préavis / Parts may vary from image without notice

Spécifications / Specifications

Type d'usage / Fluid : Eau, boissons / Water, beverages

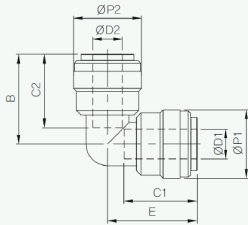
Température / Temperature range : -0°C à/to 65°C (-34°F à/to 140°F)

Pression de travail / Working pressure range : 0-230 PSI (0~16Kgf/cm²(0~1,570kPa)

Pression maximale d'utilisation en fonction de la température / Maximum usable pressure by temperature

	5/32" (4mm)	3/16" (5mm)	1/4" (6mm)	5/16" (8mm)	3/8" (10mm)	1/2" (12mm)
1°C (34°F)	16 bar (230PSI)	16 bar (230PSI)	16 bar (230PSI)	16 bar (230PSI)	11 bar (170PSI)	11 bar (170PSI)
20°C (68°F)	16 bar (230PSI)	16 bar (230PSI)	16 bar (230PSI)	16 bar (230PSI)	11 bar (170PSI)	11 bar (170PSI)
65°C (150°F)	10 bar (150PSI)	10 bar (150PSI)	10 bar (150PSI)	10 bar (150PSI)	7 bar (100PSI)	7 bar (100PSI)

Coude métrique / Metric elbow



Modèle / Model	ØD1	ØD2	ØP1	ØP2	B	C1	C2	E	Poids/Weight (g)
P4W.04	04	04	13	13	16.65	13.45	13.45	16.65	2.94
P4W.06	06	06	15	15	19.4	15.8	15.8	19.4	4.2
P4W.08	08	08	17.7	17.7	21.8	17.3	17.3	21.8	6.39
P4W.10	10	10	20	20	24.5	18.6	18.6	24.5	9.168
P4W.12	12	12	23	23	30	22.5	22.5	30	16.417



SCORPION

Raccords pour liquides / Fluid Fittings

* Les pièces peuvent différer de l'image sans préavis / Parts may vary from image without notice

Spécifications / Specifications

Type d'usage / Fluid : Eau, boissons / Water, beverages

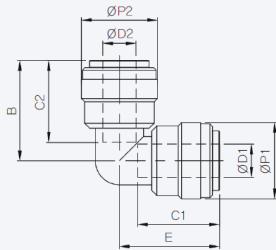
Température / Temperature range : -0°C à/ to 65°C (-34°F à/ to 140°F)

Pression de travail / Working pressure range : 0-230 PSI (0~16Kgf/cm²(0~1,570kPa)

Pression maximale d'utilisation en fonction de la température / Maximum usable pressure by temperature

	5/32" (4mm)	3/16" (5mm)	1/4" (6mm)	5/16" (8mm)	3/8" (10mm)	1/2" (12mm)
1°C (34°F)	16 bar (230PSI)	16 bar (230PSI)	16 bar (230PSI)	16 bar (230PSI)	11 bar (170PSI)	11 bar (170PSI)
20°C (68°F)	16 bar (230PSI)	16 bar (230PSI)	16 bar (230PSI)	16 bar (230PSI)	11 bar (170PSI)	11 bar (170PSI)
65°C (150°F)	10 bar (150PSI)	10 bar (150PSI)	10 bar (150PSI)	10 bar (150PSI)	7 bar (100PSI)	7 bar (100PSI)

Coude impérial / Imperial elbow



Modèle / Model	øD1	øD2	øP1	øP2	B	C1	C2	E	Poids/ Weight (g)
P4W.5/32	5/32	5/32	13	13	16.65	13.45	13.45	16.65	2.94
P4W.3/16	3/16	3/16	13.5	13.5	17.7	14.4	14.4	17.7	3.44
P4W.1/4-3/16	1/4	3/16	15	13.5	17.7	16.1	14.4	19.7	7.03
P4W.1/4	1/4	1/4	15	15	19.7	16.1	16.1	19.7	4.41
P4W.5/16-5/32	5/16	5/32	17.7	13	16.7	17.3	13.5	25.3	7.62
P4W.5/16-1/4	5/16	1/4	17.7	15	19.7	17.3	16.1	25.3	6.02
P4W.5/16	5/16	5/16	17.7	17.7	21.8	17.3	17.3	21.8	6.39
P4W.3/8-1/4	3/8	1/4	20	15	19.7	18.6	16.1	28	7
P4W.3/8-5/16	3/8	5/16	20	17.7	21.8	18.6	17.3	28	8.3
P4W.3/8	3/8	3/8	20	20	24.5	18.6	18.6	24.5	9.29
P4W.1/2-1/4	1/2	1/4	23	15	19.7	22.5	16.1	30	9.542
P4W.1/2-5/16	1/2	5/16	23	17.7	21.8	22.5	17.3	30	10.927
P4W.1/2-3/8	1/2	3/8	23	20	25.5	22.5	18.6	33	12.28
P4W.1/2	1/2	1/2	23	23	30	22.5	22.5	30	14.68



SCORPION

Raccords pour liquides / Fluid Fittings

* Les pièces peuvent différer de l'image sans préavis / Parts may vary from image without notice

Spécifications / Specifications

Type d'usage / Fluid : Eau, boissons / Water, beverages

Température / Temperature range : -0°C à/to 65°C (-34°F à/to 140°F)

Pression de travail / Working pressure range : 0-230 PSI (0~16Kgf/cm²(0~1,570kPa)

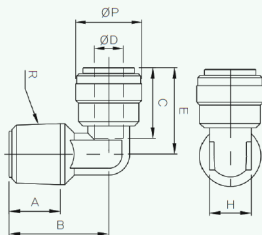
Pression maximale d'utilisation en fonction de la température / Maximum usable pressure by temperature

	5/32" (4mm)	3/16" (5mm)	1/4" (6mm)	5/16" (8mm)	3/8" (10mm)	1/2" (12mm)
1°C (34°F)	16 bar (230PSI)	16 bar (230PSI)	16 bar (230PSI)	16 bar (230PSI)	11 bar (170PSI)	11 bar (170PSI)
20°C (68°F)	16 bar (230PSI)	16 bar (230PSI)	16 bar (230PSI)	16 bar (230PSI)	11 bar (170PSI)	11 bar (170PSI)
65°C (150°F)	10 bar (150PSI)	10 bar (150PSI)	10 bar (150PSI)	10 bar (150PSI)	7 bar (100PSI)	7 bar (100PSI)

Couple maximal pour le filetage / Maximum torque for thread size

Filet /Thread	1/8"	1/4"	3/8"	1/2"
Maximum	1.5Nm	1.5Nm	3.0Nm	3.0Nm

Coude métrique, filet BSPT mâle, non rotatif / Metric elbow , male BSPT thread, no swivel



Modèle / Model	øD	øP	A	B	C	H (mm)	R(BSPT)	Poids/weight (g)
P4W.06.1/8	06	15	8.5	19	15.8	9.53	1/8	3.54
P4W.06.1/4	06	15	11.7	22.7	15.8	9.53	1/4	4.69
P4W.06.3/8	06	15	12.7	23.7	15.8	9.53	3/8	5.55
P4W.08.1/4	08	17.7	11.7	22.7	17.3	12.7	1/4	5.8
P4W.08.3/8	08	17.7	12.7	23.7	17.3	12.7	3/8	6.6
P4W.10.1/4	10	20	11.7	23.7	18.6	13.5	1/4	7.5
P4W.10.3/8	10	20	12.7	23.7	18.6	13.5	3/8	8.4



SCORPION

Raccords pour liquides / Fluid Fittings

* Les pièces peuvent différer de l'image sans préavis / Parts may vary from image without notice

Spécifications / Specifications

Type d'usage / Fluid : Eau, boissons / Water, beverages

Température / Temperature range : -0°C à/to 65°C (-34°F à/to 140°F)

Pression de travail / Working pressure range : 0-230 PSI (0~16Kgf/cm²(0~1,570kPa)

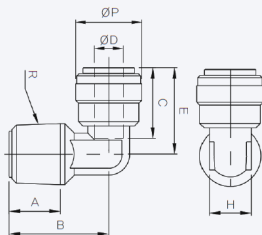
Pression maximale d'utilisation en fonction de la température / Maximum usable pressure by temperature

	5/32" (4mm)	3/16" (5mm)	1/4" (6mm)	5/16" (8mm)	3/8" (10mm)	1/2" (12mm)
1°C (34°F)	16 bar (230PSI)	16 bar (230PSI)	16 bar (230PSI)	16 bar (230PSI)	11 bar (170PSI)	11 bar (170PSI)
20°C (68°F)	16 bar (230PSI)	16 bar (230PSI)	16 bar (230PSI)	16 bar (230PSI)	11 bar (170PSI)	11 bar (170PSI)
65°C (150°F)	10 bar (150PSI)	10 bar (150PSI)	10 bar (150PSI)	10 bar (150PSI)	7 bar (100PSI)	7 bar (100PSI)

Couple maximal pour le filetage / Maximum torque for thread size

Filet /Thread	1/8"	1/4"	3/8"	1/2"
Maximum	1.5Nm	1.5Nm	3.0Nm	3.0Nm

Coude impérial, filet NPT mâle, non rotatif / Imperial elbow, male NPT thread, no swivel



Modèle / Model	øD	øP	A	B	C	H (mm)	R(NPTF)	Poids/weight (g)
P4W.3/16.1/8	3/16	13.5	8.5	17	14.4	9.5	1/8	3.085
P4W.1/4.1/8	1/4	15	8.5	19	16.1	9.53	1/8	3.56
P4W.1/4.1/4	1/4	15	11.7	22.7	16.1	9.53	1/4	4.72
P4W.1/4.3/8	1/4	15	12.7	23.7	16.1	9.53	3/8	5.54
P4W.5/16.1/4	5/16	17.7	11.7	22.7	17.3	12.7	1/4	5.93
P4W.5/16.3/8	5/16	17.7	12.7	23.7	17.3	12.7	3/8	6.75
P4W.3/8.1/4	3/8	20	11.7	23.7	18.6	13.5	1/4	7.69
P4W.3/8.3/8	3/8	20	12.7	23.7	18.6	13.5	3/8	8.67
P4W.1/2.3/8	1/2	23	12.7	25.7	22.5	16.50	3/8	12.597
P4W.1/2.1/2	1/2	23	15.9	29.9	22.5	16.50	1/2	15.815



SCORPION

Raccords pour liquides / Fluid Fittings

* Les pièces peuvent différer de l'image sans préavis / Parts may vary from image without notice

Spécifications / Specifications

Type d'usage / Fluid : Eau, boissons / Water, beverages

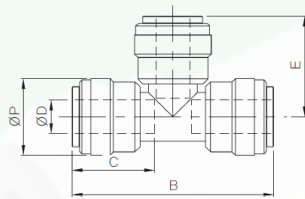
Température / Temperature range : -0°C à/to 65°C (-34°F à/to 140°F)

Pression de travail / Working pressure range : 0-230 PSI (0~16Kgf/cm²(0~1,570kPa)

Pression maximale d'utilisation en fonction de la température / Maximum usable pressure by temperature

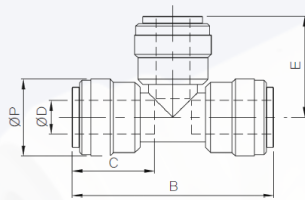
	5/32" (4mm)	3/16" (5mm)	1/4" (6mm)	5/16" (8mm)	3/8" (10mm)	1/2" (12mm)
1°C (34°F)	16 bar (230PSI)	16 bar (230PSI)	16 bar (230PSI)	16 bar (230PSI)	11 bar (170PSI)	11 bar (170PSI)
20°C (68°F)	16 bar (230PSI)	16 bar (230PSI)	16 bar (230PSI)	16 bar (230PSI)	11 bar (170PSI)	11 bar (170PSI)
65°C (150°F)	10 bar (150PSI)	10 bar (150PSI)	10 bar (150PSI)	10 bar (150PSI)	7 bar (100PSI)	7 bar (100PSI)

"T" Métrique / Metric "T"



Modèle / Model	øD	øP	B	C	Poids/weight (g)
P5W.04	04	13	33.3	13.45	4.32
P5W.06	06	15	38.8	15.8	6.76
P5W.08	08	17.7	44.6	17.3	10.21
P5W.10	10	20	49	18.6	12.908
P5W.12	12	23	62	22.5	23.962

"T" Impérial / Imperial "T"



Modèle / Model	øD	øP	B	C	Poids/weight (g)
P5W.5/32	5/32	13	33.3	13.45	4.32
P5W.3/16	3/16	13.5	35.4	14.4	5.11
P5W.1/4	1/4	15	39.4	16.1	6.43
P5W.5/16	5/16	17.7	44.6	17.3	10.21
P5W.3/8	3/8	20	49	18.6	13.1
P5W.1/2	1/2	23	62	22.5	21.07



SCORPION

Raccords pour liquides / Fluid Fittings

* Les pièces peuvent différer de l'image sans préavis / Parts may vary from image without notice

Spécifications / Specifications

Type d'usage / Fluid : Eau, boissons / Water, beverages

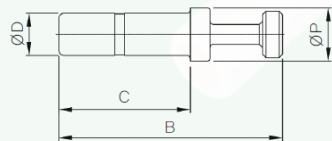
Température / Temperature range : -0°C à/ to 65°C (-34°F à/ to 140°F)

Pression de travail / Working pressure range : 0-230 PSI (0~16Kgf/cm²(0~1,570kPa)

Pression maximale d'utilisation en fonction de la température / Maximum usable pressure by temperature

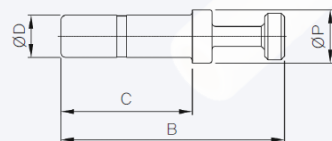
	5/32" (4mm)	3/16" (5mm)	1/4" (6mm)	5/16" (8mm)	3/8" (10mm)	1/2" (12mm)
1°C (34°F)	16 bar (230PSI)	16 bar (230PSI)	16 bar (230PSI)	16 bar (230PSI)	11 bar (170PSI)	11 bar (170PSI)
20°C (68°F)	16 bar (230PSI)	16 bar (230PSI)	16 bar (230PSI)	16 bar (230PSI)	11 bar (170PSI)	11 bar (170PSI)
65°C (150°F)	10 bar (150PSI)	10 bar (150PSI)	10 bar (150PSI)	10 bar (150PSI)	7 bar (100PSI)	7 bar (100PSI)

Bouchon métrique / Metric male plug



Modèle / Model	øD	øP	B	C	Poids/ weight (g)
P9W.04	04	6	28.5	17.5	0.41
P9W.06	06	8	34	20	0.98
P9W.08	08	10	38	22	1.63
P9W.10	10	12	40.9	25	2.508
P9W.12	12	14	43	27	4.033

Bouchon impérial / Imperial male plug



Modèle / Model	øD	øP	B	C	Poids/ weight (g)
P9W.5/32	5/32	6	28.5	17.5	0.41
P9W.3/16	3/16	6.5	30	19	0.55
P9W.1/4	1/4	8	34	20	0.92
P9W.5/16	5/16	10	38	22	1.63
P9W.3/8	3/8	12	41	25	2.38
P9W.1/2	1/2	14	43	27	4.32



SCORPION

Raccords pour liquides / Fluid Fittings

* Les pièces peuvent différer de l'image sans préavis / Parts may vary from image without notice

Spécifications / Specifications

Type d'usage / Fluid : Eau, boissons / Water, beverages

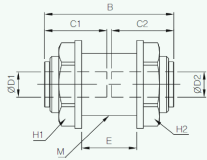
Température / Temperature range : -0°C à/to 65°C (-34°F à/to 140°F)

Pression de travail / Working pressure range : 0-230 PSI (0~16Kgf/cm²(0~1,570kPa)

Pression maximale d'utilisation en fonction de la température / Maximum usable pressure by temperature

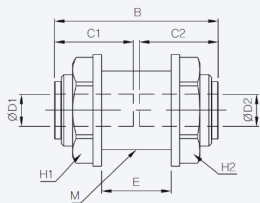
	5/32" (4mm)	3/16" (5mm)	1/4" (6mm)	5/16" (8mm)	3/8" (10mm)	1/2" (12mm)
1°C (34°F)	16 bar (230PSI)	16 bar (230PSI)	16 bar (230PSI)	16 bar (230PSI)	11 bar (170PSI)	11 bar (170PSI)
20°C (68°F)	16 bar (230PSI)	16 bar (230PSI)	16 bar (230PSI)	16 bar (230PSI)	11 bar (170PSI)	11 bar (170PSI)
65°C (150°F)	10 bar (150PSI)	10 bar (150PSI)	10 bar (150PSI)	10 bar (150PSI)	7 bar (100PSI)	7 bar (100PSI)

Passe-parois métrique / Metric bulkhead



Modèle / Model	øD1	øD2	B	C1	C2	H1	H2	Poids/weight (g)
P10W.04	04	5/32	32.3	13.45	13.45	19.05(3/4)	19.05(3/4)	8.73
P10W.06	06	06	32.8	15.8	15.8	19.05	19.05	8.2
P10W.08	08	5/16	36.1	17.3	17.3	22.23(7/8)	22.23(7/8)	12.52

Passe-parois impérial / Imperial bulkhead



Modèle / Model	øD1	øD2	B	C1	C2	H1	H2	Poids/weight (g)
P10W.5/32	5/32	5/32	32.3	13.45	13.45	19.05(3/4)	19.05(3/4)	8.73
P10W.3/16	3/16	3/16	32.4	14.4	14.4	19.05(3/4)	19.05(3/4)	9.618
P10W.1/4	1/4	1/4	33.4	16.1	16.1	19.05(3/4)	19.05(3/4)	8.16
P10W.1/4-3/8	1/4	3/8	36.2	16.1	18.6	22.23(7/8)	22.23(7/8)	13.804
P10W.5/16	5/16	5/16	36.1	17.3	17.3	22.23(7/8)	22.23(7/8)	12.52
P10W.3/8-1/4	3/8	1/4	36.2	18.6	16.1	22.23(7/8)	22.23(7/8)	12.39
P10W.3/8	3/8	3/8	40.6	18.6	18.6	22.23(7/8)	22.23(7/8)	14.6
P10W.1/2	1/2	1/2	47	22.5	22.5	28.58(1 1/8)	28.58 (1 1/8)	29.8

561, Rue Édouard, Granby, QC J2G 3Z5 TEL.: 1-800-665-3565

www.mscorpion.com | www.scorpionmfg.com



SCORPION

Raccords pour liquides / Fluid Fittings

* Les pièces peuvent différer de l'image sans préavis / Parts may vary from image without notice

Spécifications / Specifications

Type d'usage / Fluid : Eau, boissons / Water, beverages

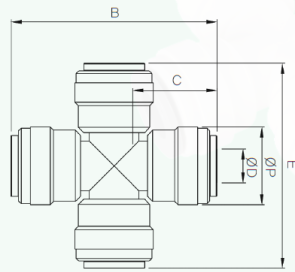
Température / Temperature range : -0°C à/à 65°C (-34°F à/à 140°F)

Pression de travail / Working pressure range : 0-230 PSI (0~16Kgf/cm²(0~1,570kPa)

Pression maximale d'utilisation en fonction de la température / Maximum usable pressure by temperature

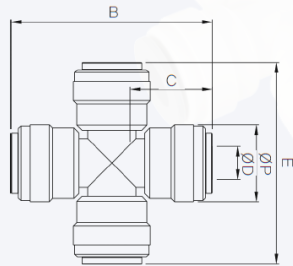
	5/32" (4mm)	3/16" (5mm)	1/4" (6mm)	5/16" (8mm)	3/8" (10mm)	1/2" (12mm)
1°C (34°F)	16 bar (230PSI)	16 bar (230PSI)	16 bar (230PSI)	16 bar (230PSI)	11 bar (170PSI)	11 bar (170PSI)
20°C (68°F)	16 bar (230PSI)	16 bar (230PSI)	16 bar (230PSI)	16 bar (230PSI)	11 bar (170PSI)	11 bar (170PSI)
65°C (150°F)	10 bar (150PSI)	10 bar (150PSI)	10 bar (150PSI)	10 bar (150PSI)	7 bar (100PSI)	7 bar (100PSI)

"X" Métrique / Metric "X"



Modèle / Model	øD	øP	B	C	Poids/weight (g)
P14W.04	04	13	33.3	13.45	5.64
P14W.06	06	15	38.8	15.8	8.7
P14W.08	08	17.7	44.6	17.3	12
P14W.10	10	20	49	18.6	16.54
P14W.12	12	23	61	22.5	30

"X" Impérial / Imperial "X"



Modèle / Model	øD	øP	B	C	Poids/weight (g)
P14W.5/32	5/32	13	33.3	13.45	5.64
P14W.1/4	1/4	15	39.4	16.1	8.38
P14W.5/16	5/16	17.7	44.6	17.3	12
P14W.3/8	3/8	20	49	18.6	17.172
P14W.1/2	1/2	23	61	22.5	27.427



SCORPION

Raccords pour liquides / Fluid Fittings

* Les pièces peuvent différer de l'image sans préavis / Parts may vary from image without notice

Spécifications / Specifications

Type d'usage / Fluid : Eau, boissons / Water, beverages

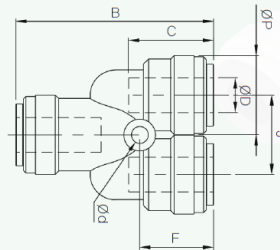
Température / Temperature range : -0°C à/to 65°C (-34°F à/to 140°F)

Pression de travail / Working pressure range : 0-230 PSI (0~16Kgf/cm²(0~1,570kPa)

Pression maximale d'utilisation en fonction de la température / Maximum usable pressure by temperature

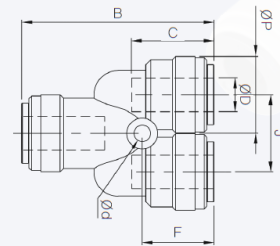
	5/32" (4mm)	3/16" (5mm)	1/4" (6mm)	5/16" (8mm)	3/8" (10mm)	1/2" (12mm)
1°C (34°F)	16 bar (230PSI)	16 bar (230PSI)	16 bar (230PSI)	16 bar (230PSI)	11 bar (170PSI)	11 bar (170PSI)
20°C (68°F)	16 bar (230PSI)	16 bar (230PSI)	16 bar (230PSI)	16 bar (230PSI)	11 bar (170PSI)	11 bar (170PSI)
65°C (150°F)	10 bar (150PSI)	10 bar (150PSI)	10 bar (150PSI)	10 bar (150PSI)	7 bar (100PSI)	7 bar (100PSI)

"Y" Métrique / Metric "Y"



Modèle / Model	øD	ød	øP	B	C	Poids/weight (g)
P23W.04	04	2.5	13	33.3	13.45	5.88
P23W.06	06	3.2	15	36.8	15.8	8.13
P23W.08	08	4	17.7	42.6	17.3	12.28
P23W.10	10	4	20	47	18.6	16.174
P23W.12	12	4	23	47	22.5	27.8

"Y" Impérial / Imperial "Y"



Modèle / Model	øD	ød	øP	B	C	Poids/weight (g)
P23W.5/32	5/32	2.5	13	33.3	13.45	5.88
P23W.1/4	1/4	3.2	15	37.4	16.1	7.68
P23W.5/16	5/16	4	17.7	42.6	17.3	12.28
P23W.3/8	3/8	4	20	47	18.6	16.35
P23W.1/2	1/2	4	23	56	22.5	25.136



SCORPION

Raccords pour liquides / Fluid Fittings

* Les pièces peuvent différer de l'image sans préavis / Parts may vary from image without notice

Spécifications / Specifications

Type d'usage / Fluid : Eau, boissons / Water, beverages

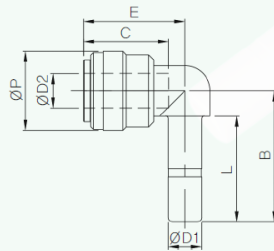
Température / Temperature range : -0°C à/to 65°C (-34°F à/to 140°F)

Pression de travail / Working pressure range : 0-230 PSI (0~16Kgf/cm²(0~1,570kPa)

Pression maximale d'utilisation en fonction de la température / Maximum usable pressure by temperature

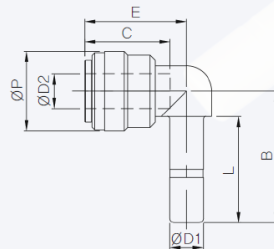
	5/32" (4mm)	3/16" (5mm)	1/4" (6mm)	5/16" (8mm)	3/8" (10mm)	1/2" (12mm)
1°C (34°F)	16 bar (230PSI)	16 bar (230PSI)	16 bar (230PSI)	16 bar (230PSI)	11 bar (170PSI)	11 bar (170PSI)
20°C (68°F)	16 bar (230PSI)	16 bar (230PSI)	16 bar (230PSI)	16 bar (230PSI)	11 bar (170PSI)	11 bar (170PSI)
65°C (150°F)	10 bar (150PSI)	10 bar (150PSI)	10 bar (150PSI)	10 bar (150PSI)	7 bar (100PSI)	7 bar (100PSI)

Adaptateur métrique coudé / Metric plug in elbow



Modèle / Model	øD1	øD2	øP	B	C	Poids/weight (g)
P35W.04	04	04	13	21.1	13.45	1.9
P35W.06	06	06	15	24.75	15.8	3.06
P35W.10.06	06	10	15	29.75	15.8	4.613
P35W. 08	08	08	17.7	27.9	17.3	5.26
P35W.10	10	10	20	31.7	18.6	7.231
P23W.12	12	12	23	36.5	22.5	11.969

Adaptateur impérial coudé / Imperial plug in elbow



Modèle / Model	øD1	øD2	øP	B	C	Poids/weight (g)
P35W.5/32	5/32	5/32	13	21.1	13.45	1.9
P35W.3/16	3/16	3/16	13.5	23.1	14.4	2.4
P35W.1/4	1/4	1/4	15	24.75	16.1	3.07
P35W.5/16-1/4	5/16	1/4	15	26.75	16.1	3.5
P35W. 3/8-1/4	3/8	1/4	15	29.76	16.1	4.13
P35W. 5/16	5/16	5/16	17.7	27.9	17.3	5.26
P35W. 1/4-3/8	1/4	3/8	20	26.75	18.6	6.43
P35W. 5/16-3/8	5/16	3/8	20	28.75	18.6	6.76
P35W. 3/8	3/8	3/8	20	31.7	18.6	6.95
P35W.1/2-3/8	1/2	3/8	20	33.75	18.6	8.01
P35W. 1/2	1/2	1/2	23	36.5	22.5	11.54



SCORPION

Raccords pour liquides / Fluid Fittings

* Les pièces peuvent différer de l'image sans préavis / Parts may vary from image without notice

Spécifications / Specifications

Type d'usage / Fluid : Eau, boissons / Water, beverages

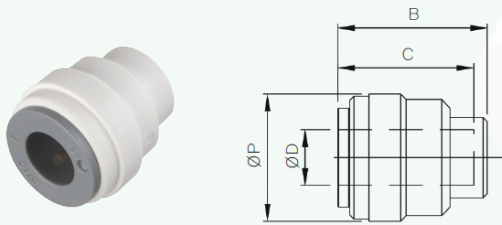
Température / Temperature range : -0°C à/to 65°C (-34°F à/to 140°F)

Pression de travail / Working pressure range : 0-230 PSI (0~16Kgf/cm²(0~1,570kPa)

Pression maximale d'utilisation en fonction de la température / Maximum usable pressure by temperature

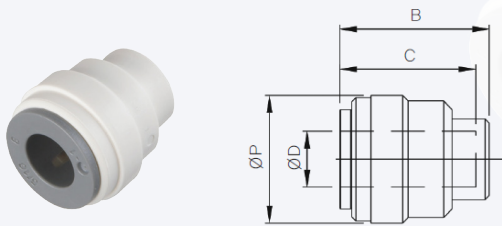
	5/32" (4mm)	3/16" (5mm)	1/4" (6mm)	5/16" (8mm)	3/8" (10mm)	1/2" (12mm)
1°C (34°F)	16 bar (230PSI)	16 bar (230PSI)	16 bar (230PSI)	16 bar (230PSI)	11 bar (170PSI)	11 bar (170PSI)
20°C (68°F)	16 bar (230PSI)	16 bar (230PSI)	16 bar (230PSI)	16 bar (230PSI)	11 bar (170PSI)	11 bar (170PSI)
65°C (150°F)	10 bar (150PSI)	10 bar (150PSI)	10 bar (150PSI)	10 bar (150PSI)	7 bar (100PSI)	7 bar (100PSI)

Bouchon femelle métrique / Metric female plug



Modèle / Model	øD	øP	B	C	Poids/ weight (g)
P36W.04	04	13	14.95	13.45	1.41
P36W.06	06	15	17.4	15.8	2.02
P36W.08	08	17.7	19.3	17.3	3.05
P36W.10	10	20	20.8	18.6	4.199
P36W.12	12	23	25	22.5	7.673

Bouchon femelle impérial / Imperial female plug



Modèle / Model	øD	øP	B	C	Poids/ weight (g)
P36W.5/32	5/32	13	14.95	13.45	1.41
P36W.3/16	3/16	13.5	16	14.4	1.67
P36W.1/4	1/4	15	17.7	16.1	2.15
P36W.5/16	5/16	17.7	19.3	17.3	3.05
P36W.3/8	3/8	20	20.8	18.6	4.33
P36W.1/2	1/2	23	25	22.5	6.76