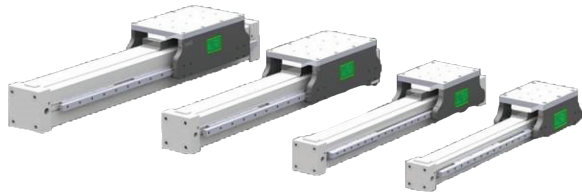
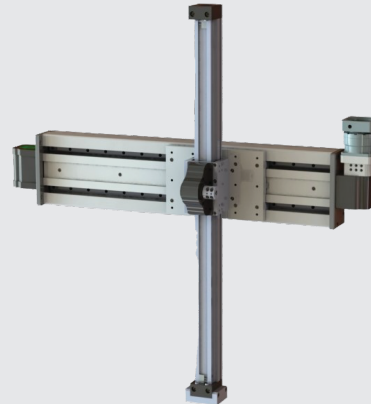
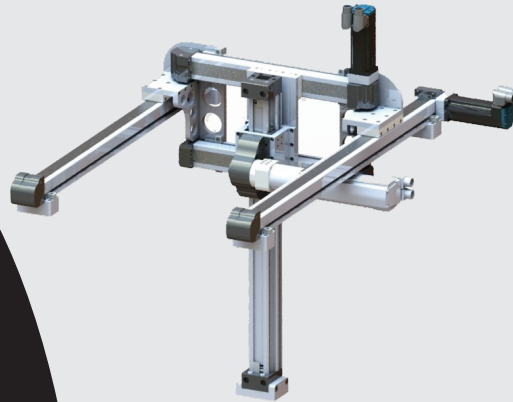


MGL series Pneumatic



*** SCORPION proudly offers one of the most rugged & heavy duty pneumatic rodless cylinders on the market today, for any applications with high axial or radial loading. Made in Canada with fast delivery. Available from bore size 32mm to 63mm.

Multi-Axis Cartesian Robots



*** Available upon special request.
Contact us for more information.



SCORPION

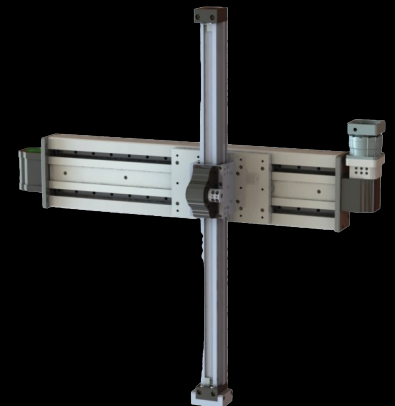
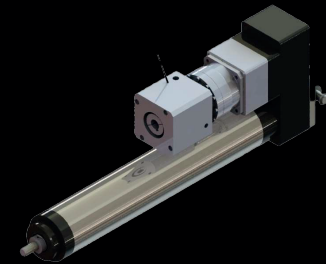
561, Rue Édouard, Granby, QC J2G 3Z5

TEL.: 1-800-665-3565
www.scorpionmfg.com



SCORPION

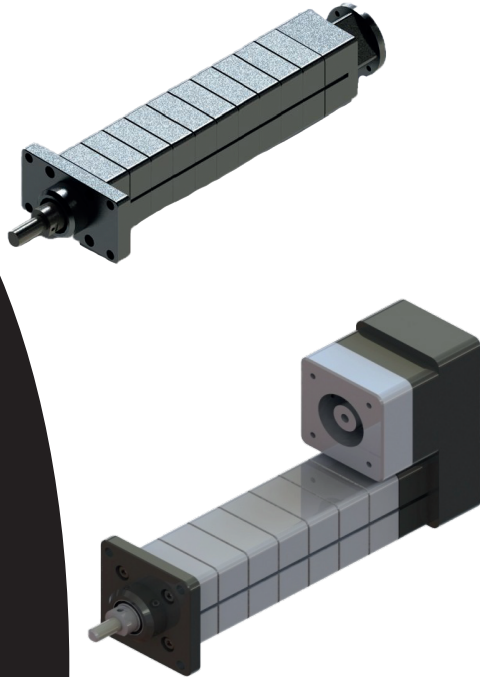
Electric cylinders



Designed and manufactured in Canada

OUR MISSION = YOUR PERFORMANCE

SCS series



Thrust capacity up to 68 kN

Speed up to 2133mm/s

Range of motion up to 1500 mm

Absolute control of all movement parameters (servomotor)

Movement precision up to 0.015 mm

*** Compatible with any brand motor and drive

*** Scorpion offers a special external brake option for vertical applications.
Contact us for more information.

SCORPION CYLINDER CHARACTERISTICS

Velocity

Power

Flexibility

Precision

SCR series



***Special Scorpion brake

Thrust capacity up to 68 kN

Speed up to 2133mm/s

Range of motion up to 1500 mm

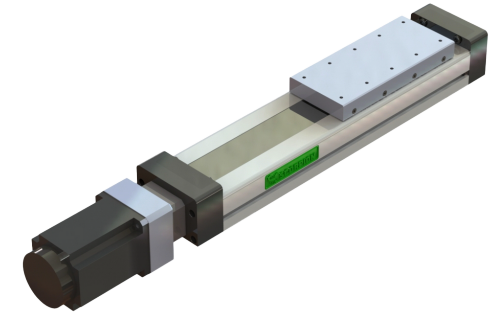
Absolute control of all movement parameters (servomotor)

Movement precision up to 0.015 mm

SCR series is very well sealed for harsh environments
SCR series available with optional stainless steel construction for corrosion resistant applications

*** Compatible with any brand motor and drive

*** Special Scorpion brake, available for vertical application. Contact us for more information



Linear axis units can be made with internal belt for **high speed & precision**
OR with internal ball screw for **high force & precision.**



Linear axes and 7th Axis

*** Compatible with any brand motor and drive

*** 7th Axis unit available upon special request.